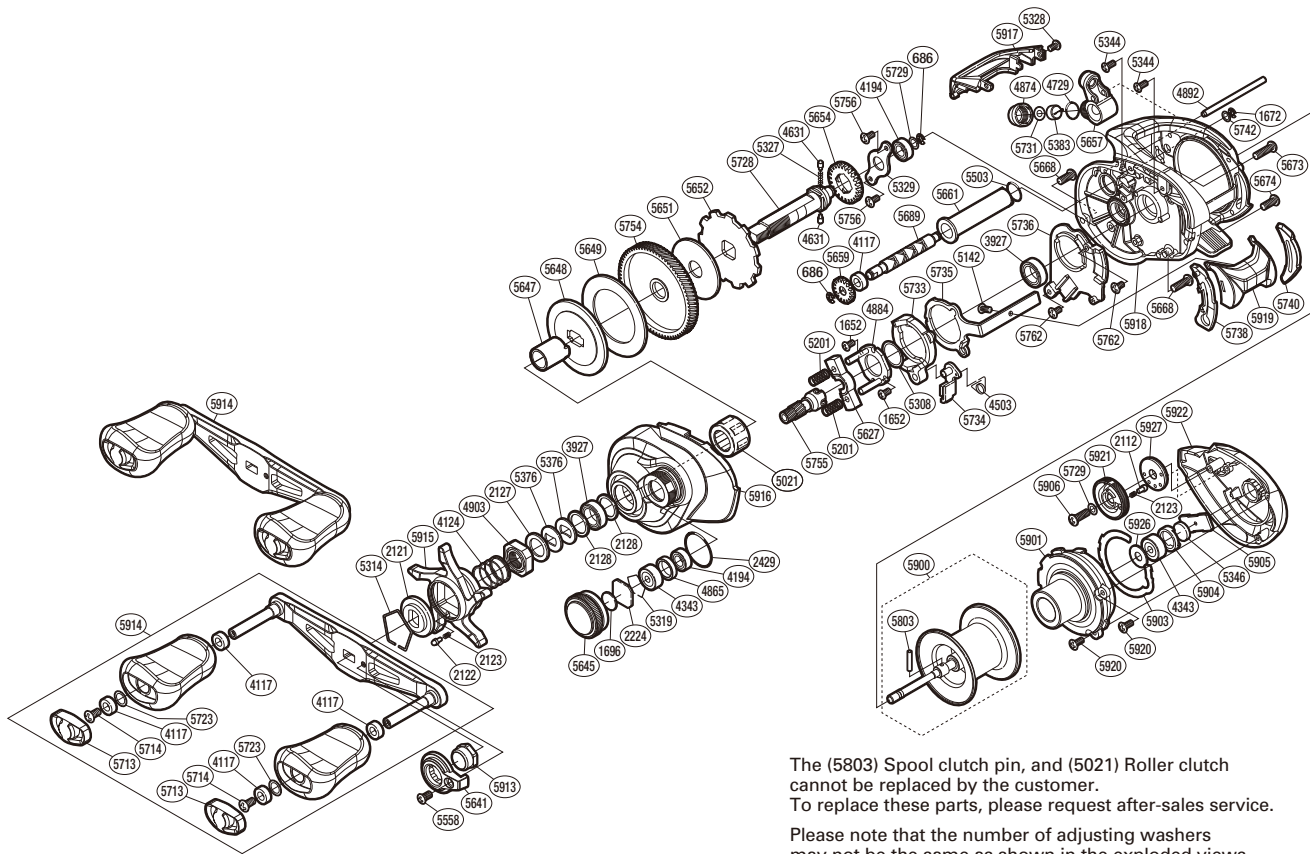


SHIMANO

CURADO DC S A-RB

CUDC151XG



The (5803) Spool clutch pin, and (5021) Roller clutch cannot be replaced by the customer. To replace these parts, please request after-sales service.

Please note that the number of adjusting washers may not be the same as shown in the exploded views. (Adjustment will vary with each individual product.)

(51RH39P151X)

| Part No. | Description | Part No. | Description | Part No. | Description |
|----------|-----------------------|----------|--------------------------|----------|------------------------|
| BNT0686 | E Lock | BNT5328 | Screw | BNT5734 | Clutch Pawl Assembly |
| BNT1652 | Screw | BNT5329 | Drive Shaft Retainer | BNT5735 | Clutch Plate |
| BNT1672 | E Lock | BNT5344 | Screw | BNT5736 | Clutch Guard |
| BNT1696 | Cast Control Spacer | BNT5346 | Spacer B | BNT5738 | Clutch Bar Guide B |
| BNT2121 | Star Drag Click Plate | BNT5376 | Drag Spring Washer | BNT5740 | Clutch Bar Guide A |
| BNT2122 | Click Pin | BNT5383 | Line Guide Pawl | BNT5742 | Washer |
| BNT2123 | Click Spring | BNT5503 | O Ring | BNT5754 | Drive Gear |
| BNT2127 | Star Drag Spacer | BNT5558 | Screw | BNT5755 | Pinion Gear |
| BNT2128 | Washer | BNT5627 | Yoke | BNT5756 | Screw |
| BNT2224 | Spool Tension Spacer | BNT5641 | Handle Nut Plate | BNT5762 | Screw |
| BNT2429 | O Ring | BNT5645 | Cast Control Cap | BNT5803 | Spool Clutch Pin |
| BNT3927 | Ball Bearing | BNT5647 | Roller Clutch Inner Tube | BNT5900 | Spool Assembly |
| BNT4117 | Bushing | BNT5648 | Key Washer | BNT5901 | B Side Plate Substrate |
| BNT4124 | Star Drag Spring | BNT5649 | Drag Washer | BNT5903 | Washer |
| BNT4194 | Ball Bearing | BNT5651 | Drag Washer | BNT5904 | Bearing Retainer |
| BNT4343 | Ball Bearing | BNT5652 | Anti-reverse Ratchet | BNT5905 | Spool Shaft Spacer |
| BNT4631 | Idle Gear Pin | BNT5654 | Idle Gear | BNT5906 | Screw |
| BNT4729 | O Ring | BNT5657 | Line Guide Assembly | BNT5913 | Handle Nut |
| BNT4865 | Bearing Spacer | BNT5659 | Idle Gear | BNT5914 | Handle Assembly |
| BNT4874 | Pawl Cap | BNT5661 | Level Wind Guard | BNT5915 | Star Drag |
| BNT4884 | Clutch Cam Retainer | BNT5668 | Screw | BNT5916 | Left Side Plate |
| BNT4892 | Stabilizer Bar | BNT5673 | Screw | BNT5917 | Level Wind Protector |
| BNT4903 | Star Drag Nut | BNT5674 | Screw | BNT5918 | Frame Assembly |
| BNT5021 | Roller Clutch Bearing | BNT5689 | Worm Shaft | BNT5919 | Clutch Button |
| BNT5142 | Screw | BNT5713 | Handle Knob Seal | BNT5920 | Screw |
| BNT5201 | Yoke Spring | BNT5714 | Screw | BNT5921 | Brake Dial |
| BNT5308 | Washer | BNT5723 | Washer | BNT5922 | Right Side Plate |
| BNT5314 | Click Plate Retainer | BNT5728 | Drive Shaft | BNT5926 | Washer |
| BNT5319 | Bearing Retainer | BNT5729 | Spacer | BNT5927 | Click Ring |
| BNT5327 | Idle Gear Spring | BNT5731 | Spacer | | |
| | | BNT5733 | Clutch Cam | BNT4692 | B-100 Oil (Accessory) |