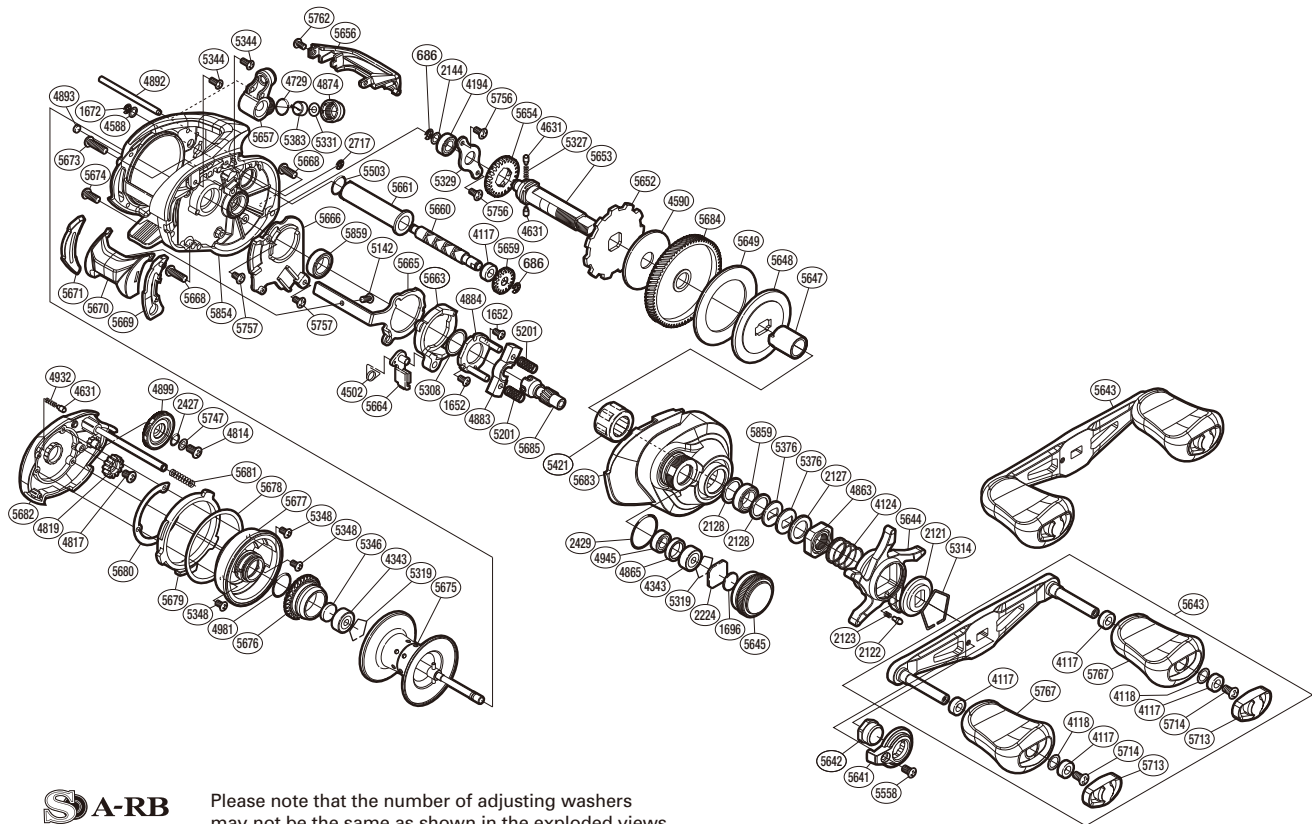


# SHIMANO

## CURADO

## CU-200HGK



**S A-RB**  
(51RH39K200X)

Please note that the number of adjusting washers may not be the same as shown in the exploded views. (Adjustment will vary with each individual product.)

Part No.	Description	Part No.	Description	Part No.	Description
BNT0686	E Lock	BNT4899	Brake Dial	BNT5660	Worm Shaft
BNT1652	Screw	BNT4932	Click Spring	BNT5661	Level Wind Guard
BNT1672	E Lock	BNT4945	Ball Bearing	BNT5663	Clutch Cam
BNT1696	Cast Control Spacer	BNT4981	O Ring	BNT5664	Clutch Pawl Assembly
BNT2121	Star Drag Click Plate	BNT5142	Screw	BNT5665	Clutch Plate
BNT2122	Click Pin	BNT5201	Yoke Spring	BNT5666	Clutch Guard
BNT2123	Click Spring	BNT5308	Washer	BNT5668	Screw
BNT2127	Star Drag Spacer	BNT5314	Click Plate Retainer	BNT5669	Clutch Bar Guide B
BNT2128	Washer	BNT5319	Bearing Retainer	BNT5670	Clutch Button Assembly
BNT2144	Washer	BNT5327	Idle Gear Spring	BNT5671	Clutch Bar Guide A
BNT2224	Spool Tension Spacer	BNT5329	Drive Shaft Retainer	BNT5673	Screw
BNT2427	O Ring	BNT5331	Spacer	BNT5674	Screw
BNT2429	O Ring	BNT5344	Screw	BNT5675	Spool Assembly
BNT2717	E Lock	BNT5346	Spacer B	BNT5676	Brake Ring Gear Assembly
BNT4117	Bushing	BNT5348	Screw	BNT5677	Brake Case Assembly
BNT4118	Washer	BNT5376	Washer	BNT5678	Washer
BNT4124	Star Drag Spring	BNT5383	Line Guide Pawl	BNT5679	Left Side Plate Cam Lever
BNT4194	Ball Bearing	BNT5421	Roller Clutch Bearing	BNT5680	Washer
BNT4343	Ball Bearing	BNT5503	O Ring	BNT5681	Spring
BNT4502	Clutch Pawl Spring	BNT5558	Screw	BNT5682	Left Side Plate Assembly
BNT4588	Washer	BNT5641	Handle Nut Plate	BNT5683	Right Side Plate
BNT4590	Drag Washer	BNT5642	Handle Nut	BNT5684	Drive Gear
BNT4631	Idle Gear Pin	BNT5643	Handle Assembly	BNT5685	Pinion Gear
BNT4729	O Ring	BNT5644	Star Drag	BNT5713	Handle Knob Seal
BNT4814	Screw	BNT5645	Cast Control Cap	BNT5714	Screw
BNT4817	Screw	BNT5647	Roller Clutch Inner Tube	BNT5747	Washer
BNT4819	Idle Gear	BNT5648	Key Washer	BNT5756	Screw
BNT4863	Star Drag Nut	BNT5649	Drag Washer	BNT5757	Screw
BNT4865	Bearing Spacer	BNT5652	Anti-Reverse Ratchet	BNT5762	Screw
BNT4874	Pawl Cap	BNT5653	Drive Shaft	BNT5767	Handle Knob
BNT4883	Yoke	BNT5654	Idle Gear	BNT5854	Frame Assembly
BNT4884	Clutch Cam Retainer	BNT5656	Level Wind Protector	BNT5859	Ball Bearing
BNT4892	Stabilizer Bar	BNT5657	Line Guide Assembly		
BNT4893	Washer	BNT5659	Idle Gear	BNT4692	B-100 Oil (Accessory)