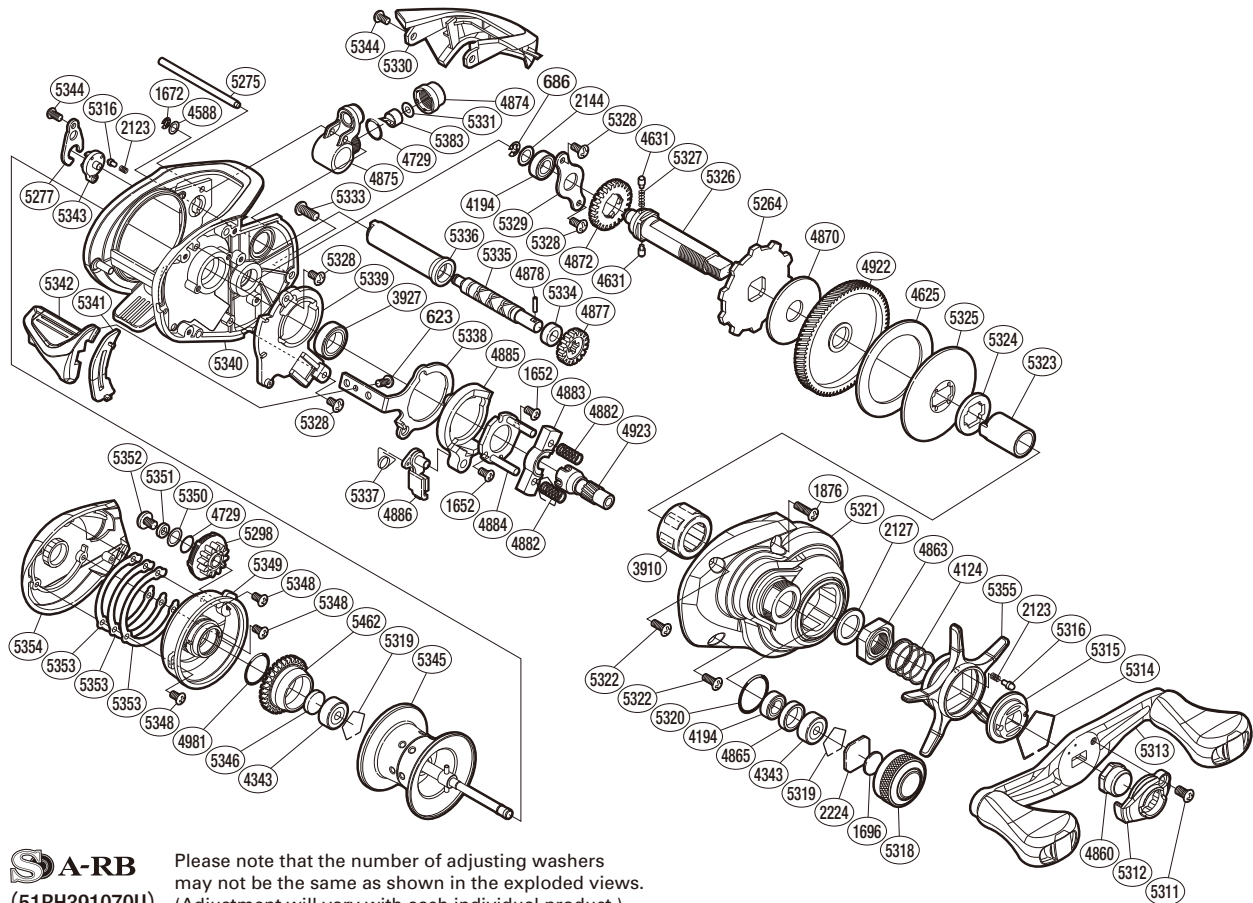


SHIMANO

CURADO S A-RB

CU-70HG



S A-RB
(51RH391070U)

Please note that the number of adjusting washers may not be the same as shown in the exploded views. (Adjustment will vary with each individual product.)

| Part No. | Description | Part No. | Description | Part No. | Description |
|----------|-----------------------|----------|--------------------------|----------|-----------------------|
| BNT0623 | Screw | BNT4883 | Yoke | BNT5330 | Level Wind Protector |
| BNT0686 | E Lock | BNT4884 | Clutch Cam Retainer | BNT5331 | Spacer |
| BNT1652 | Screw | BNT4885 | Clutch Cam | BNT5333 | Screw |
| BNT1672 | E Lock | BNT4886 | Clutch Pawl | BNT5334 | Bushing |
| BNT1696 | Cast Control Spacer | BNT4922 | Drive Gear | BNT5335 | Worm Shaft |
| BNT1876 | Screw | BNT4923 | Pinion Gear | BNT5336 | Level Wind Guard |
| BNT2123 | Click Spring | BNT4981 | O Ring | BNT5337 | Clutch Pawl Spring |
| BNT2127 | Star Drag Spacer | BNT5264 | Anti-Reverse Ratchet | BNT5338 | Clutch Plate |
| BNT2144 | Washer | BNT5275 | Stabilizer Bar | BNT5339 | Clutch Guard |
| BNT2224 | Spool Tension Spacer | BNT5277 | Cam Lever Retainer | BNT5340 | Frame |
| BNT3910 | Roller Clutch Bearing | BNT5298 | Brake Dial | BNT5341 | Clutch Bar Guide |
| BNT3927 | Ball Bearing | BNT5311 | Screw | BNT5342 | Clutch Bar |
| BNT4124 | Star Drag Spring | BNT5312 | Handle Nut Plate | BNT5343 | Side Plate Cam Lever |
| BNT4194 | Ball Bearing | BNT5313 | Handle Assembly | BNT5344 | Screw |
| BNT4343 | Ball Bearing | BNT5314 | Click Plate Retainer | BNT5345 | Spool Assembly |
| BNT4588 | Washer | BNT5315 | Star Drag Click Plate | BNT5346 | Spacer B |
| BNT4625 | Drag Washer | BNT5316 | Click Pin | BNT5348 | Screw |
| BNT4631 | Idle Gear Pin | BNT5318 | Cast Control Cap | BNT5349 | Brake Case |
| BNT4729 | O Ring | BNT5319 | Bearing Retainer | BNT5350 | Washer |
| BNT4860 | Handle Nut | BNT5320 | O Ring | BNT5351 | Br Dial Spacer |
| BNT4863 | Star Drag Nut | BNT5321 | Right Side Plate | BNT5352 | Screw |
| BNT4865 | Bearing Spacer | BNT5322 | Screw | BNT5353 | Washer |
| BNT4870 | Drag Washer | BNT5323 | Roller Clutch Inner Tube | BNT5354 | Left Side Plate |
| BNT4872 | Idle Gear | BNT5324 | Key Washer Spacer | BNT5355 | Star Drag |
| BNT4874 | Pawl Cap | BNT5325 | Key Washer | BNT5383 | Line Guide Pawl |
| BNT4875 | Line Guide | BNT5326 | Drive Shaft | BNT5462 | Brake Ring Gear |
| BNT4877 | Idle Gear | BNT5327 | Idle Gear Spring | | |
| BNT4878 | Worm Shaft Pin | BNT5328 | Screw | | |
| BNT4882 | Yoke Spring | BNT5329 | Drive Shaft Retainer | BNT4692 | B-100 Oil (accessory) |