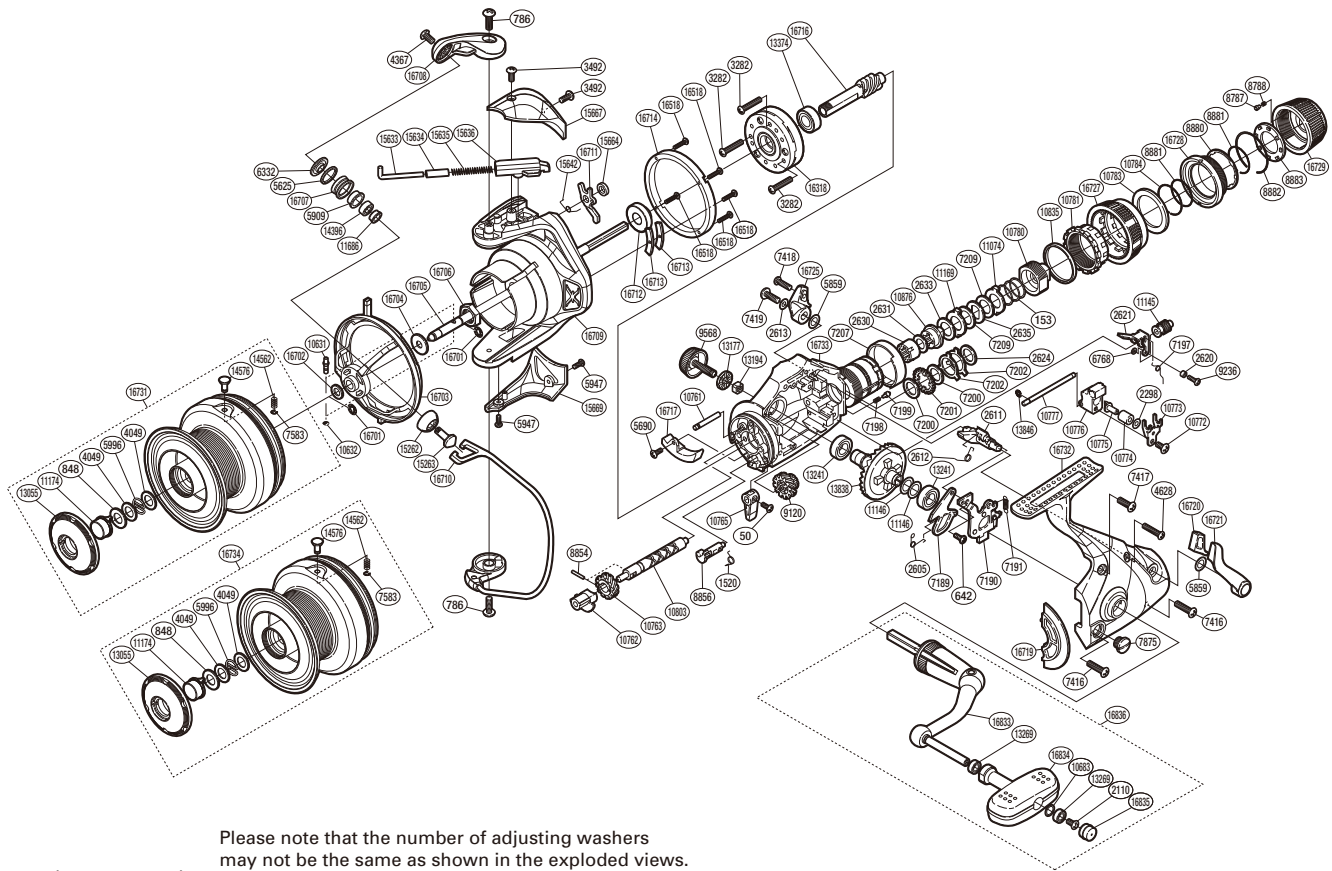


SHIMANO

BAITRUNNER X-AERO SA-RB 14BTRX8RA



Please note that the number of adjusting washers may not be the same as shown in the exploded views. (Adjustment will vary with each individual product.)

(51SH38800G)

| Part No. | Description | Part No. | Description | Part No. | Description |
|----------|--------------------------|----------|----------------------------------|----------|-----------------------------|
| RD 0050 | Screw | RD 8787 | Click Pin | RD15263 | Line Roller Support **** |
| RD 0153 | Drag Coil Spring | RD 8788 | Click Spring | RD15633 | Bail Spring Guide A |
| RD 0642 | Screw | RD 8854 | Worm Shaft Pin | RD15634 | Bail Spring Guide A Support |
| RD 0786 | Screw | RD 8856 | Anti-Reverse Cam | RD15635 | Bail Spring |
| RD 0848 | Washer | RD 8880 | Drag Knob Washer | RD15636 | Bail Spring Guide B |
| RD 1520 | Anti-Reverse Cam Spring | RD 8881 | Drag Knob Retainer | RD15642 | Lever Spring |
| RD 2110 | Screw | RD 8882 | Click Plate Retainer | RD15644 | Washer |
| RD 2298 | Spacer | RD 8883 | Click Plate | RD15667 | Bail Spring Cover |
| RD 2605 | Clutch Pawl Spring | RD 9120 | Idle Gear B | RD15669 | Bail Hold Support Guard |
| RD 2610 | Clutch Spring | RD 9236 | Screw | RD16381 | Roller Clutch Assembly |
| RD 2611 | Baitrunner Lever Shaft | RD 9568 | Handle Screw Cap | RD16518 | Screw |
| RD 2613 | Lock Washer | RD10631 | Main Shaft Pin | RD16701 | E Lock |
| RD 2620 | Clutch Screw Collar | RD10632 | O Ring | RD16702 | Line Safety Guard Spacer |
| RD 2621 | Baitrunner Clutch | RD10683 | Washer | RD16703 | Line Safety Guard |
| RD 2624 | Drag Washer | RD10761 | Idle Gear B Shaft | RD16704 | Line Safety Guard Washer |
| RD 2630 | Free Spool Tension Shaft | RD10762 | Worm Bushing | RD16705 | Main Shaft |
| RD 2631 | Drag Washer | RD10763 | Idle Gear | RD16706 | Rotor Nut |
| RD 2633 | Drag Washer | RD10765 | Anti-Reverse Lever | RD16707 | Line Roller **** |
| RD 2635 | Key Washer | RD10772 | Screw | RD16708 | Bail Arm |
| RD 3282 | Screw | RD10773 | Oscillating Slider Retainer | RD16709 | Rotor |
| RD 3492 | Screw | RD10774 | Oscillating Slider Bushing | RD16710 | Bail Assembly |
| RD 4049 | Washer | RD10775 | Oscillating Pawl | RD16711 | Bail Trip Lever |
| RD 4367 | Screw | RD10776 | Oscillating Slider | RD16712 | Rotor Bushing |
| RD 4628 | Screw | RD10777 | Oscillating Guide | RD16713 | Counterweight |
| RD 5625 | Line Roller Spacer | RD10780 | Pressure Screw | RD16714 | Rotor Cover |
| RD 5690 | Screw | RD10781 | Baitrunner Tension Screw | RD16716 | Pinion Gear * |
| RD 5859 | Spacer | RD10783 | Tension Dial Retainer Ring | RD16717 | Bail Trip Strike |
| RD 5909 | Line Roller Bushing | RD10784 | Baitrunner Tension Dial Retainer | RD16719 | Side Cover Flange |
| RD 5947 | Screw | RD10803 | Worm Shaft | RD16720 | Baitrunner Lever Bridge |
| RD 5996 | Locking Spring | RD10835 | Dial Washer | RD16721 | Baitrunner Lever Arm L |
| RD 6332 | Line Roller Washer | RD10876 | Drag Shaft | RD16725 | Baitrunner Lever Arm R |
| RD 6616 | Screw | RD11074 | Eared Washer | RD16727 | Baitrunner Tension Dial |
| RD 6768 | Spacer | RD11145 | Clutch Shaft | RD16728 | Drag Programmer B |
| RD 7189 | Clutch Pawl | RD11146 | Washer | RD16729 | Drag Programmer A |
| RD 7190 | Clutch Plate Assembly | RD11169 | Eared Washer | RD16731 | Spool Assembly |
| RD 7191 | Baitrunner Click Spring | RD11174 | Push Button | RD16732 | Side Cover |
| RD 7197 | Clutch Shaft Spring | RD11686 | Bearing Spacer | RD16733 | Body |
| RD 7198 | Click Spring | RD13055 | Push Button Collar | RD16833 | Handle Shank Assembly |
| RD 7199 | Click Shoe | RD13177 | Handle Screw Cap Spacer | RD16834 | Handle Knob |
| RD 7200 | Drag Washer | RD13194 | Handle Screw Lock | RD16835 | Handle Knob Seal |
| RD 7201 | Click Gear | RD13241 | Ball Bearing | RD16836 | Handle Assembly |
| RD 7202 | Eared Washer | RD13269 | Ball Bearing | | |
| RD 7207 | Dial Spacer | RD13374 | Ball Bearing | RD16734 | Spare Spool Assembly |
| RD 7209 | Drag Washer | RD13838 | Drive Gear | | |
| RD 7416 | Screw | RD13846 | E Lock | | |
| RD 7418 | Screw | RD14396 | Ball Bearing | PK 0274 | Gear Set * |
| RD 7419 | Screw | RD14562 | Line Clip Spring | PK 0026 | Bearing Set ** |
| RD 7583 | E Lock | RD14576 | Line Clip | PK 0130 | Oscillation Set *** |
| RD 7875 | Oil Cap | RD15262 | Line Roller Support Cover | PK 0275 | Line Roller Set **** |