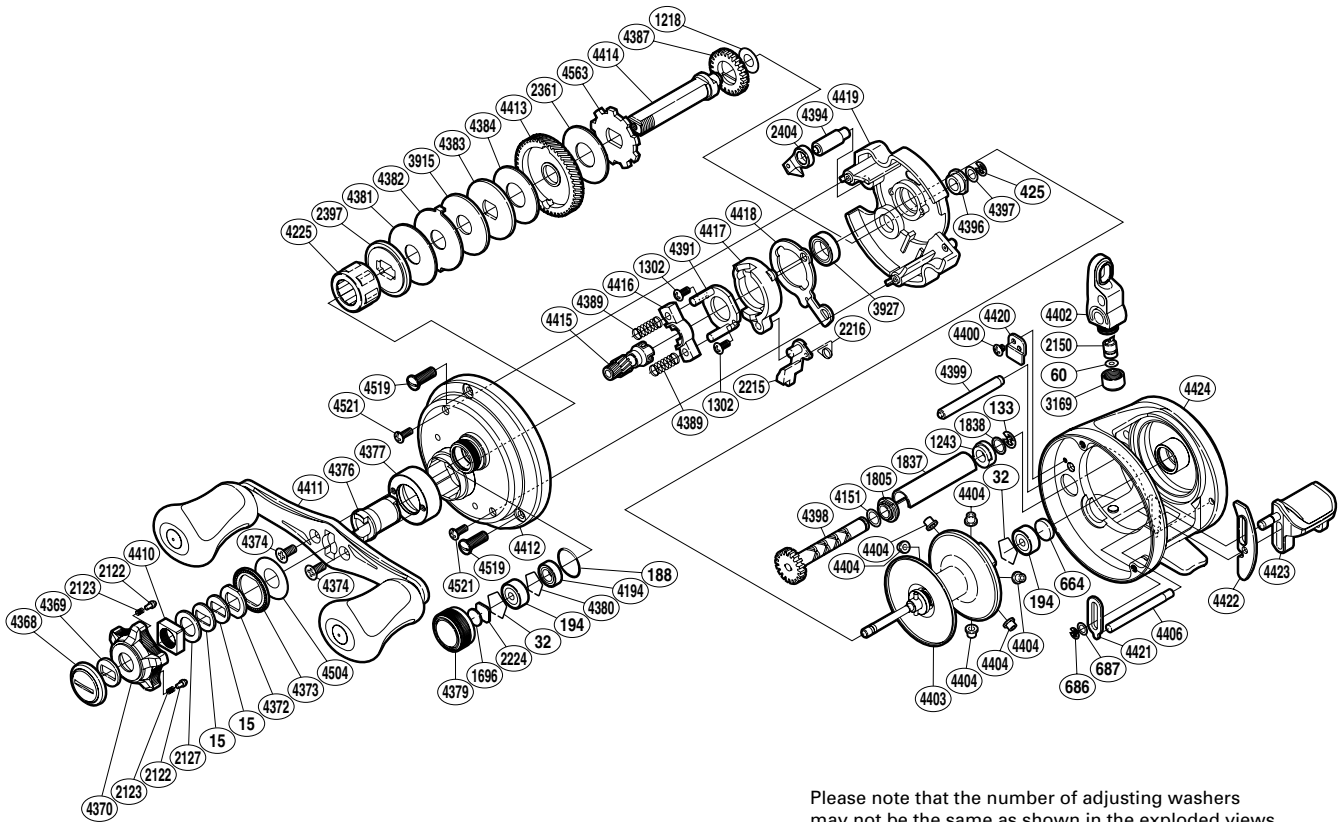


# SHIMANO

CALCUTTA SA-RB

CT-201D



(1RH318201U)

Please note that the number of adjusting washers may not be the same as shown in the exploded views. (Adjustment will vary with each individual product.)

| Part No. | Description          | Part No. | Description              | Part No. | Description              |
|----------|----------------------|----------|--------------------------|----------|--------------------------|
| BNT0015  | Drag Spring Washer   | BNT3169  | Pawl Cap                 | BNT4399  | Level Wind Guide         |
| BNT0032  | Bearing Retainer     | BNT3915  | Drag Washer              | BNT4400  | Screw                    |
| BNT0060  | Spacer               | BNT3927  | Ball Bearing             | BNT4402  | Line Guide               |
| BNT0133  | E Lock               | BNT4151  | Washer                   | BNT4403  | Spool Assembly           |
| BNT0188  | O Ring               | BNT4194  | Ball Bearing             | BNT4404  | Brake Collar             |
| BNT0194  | Ball Bearing         | BNT4225  | Roller Clutch Bearing    | BNT4406  | Clutch Bar Support       |
| BNT0425  | E Lock               | BNT4368  | Handle Bolt              | BNT4410  | Star Drag Nut            |
| BNT0664  | Spacer B             | BNT4369  | Handle Lock Spring       | BNT4411  | Handle Assembly          |
| BNT0686  | E Lock               | BNT4370  | Star Drag                | BNT4412  | Left Side Plate          |
| BNT0687  | Spacer               | BNT4372  | Drive Shaft Shield       | BNT4413  | Drive Gear               |
| BNT1218  | Spacer               | BNT4373  | Star Drag Click Plate    | BNT4414  | Drive Shaft              |
| BNT1243  | Worm Bushing B       | BNT4374  | Screw                    | BNT4415  | Pinion Gear              |
| BNT1302  | Screw                | BNT4376  | Roller Clutch Inner Tube | BNT4416  | Yoke                     |
| BNT1696  | Cast Control Spacer  | BNT4377  | Handle Plate             | BNT4417  | Clutch Cam               |
| BNT1805  | Worm Bushing A       | BNT4379  | Cast Control Cap         | BNT4418  | Clutch Plate             |
| BNT1837  | Level Wind Guard     | BNT4380  | Retainer                 | BNT4419  | Set Plate                |
| BNT1838  | Spacer               | BNT4381  | Drag Washer              | BNT4420  | Worm Bushing Retainer    |
| BNT2122  | Click Pin            | BNT4382  | Eared Washer             | BNT4421  | Clutch Bar Guide A       |
| BNT2123  | Click Spring         | BNT4383  | Key Washer               | BNT4422  | Clutch Bar Guide B       |
| BNT2127  | Star Drag Spacer     | BNT4384  | Drag Washer              | BNT4423  | Quick-Fire II Clutch Bar |
| BNT2150  | Line Guide Pawl      | BNT4387  | Idle Gear                | BNT4424  | One-Piece Frame          |
| BNT2215  | Clutch Pawl          | BNT4389  | Yoke Spring              | BNT4504  | Washer                   |
| BNT2216  | Clutch Pawl Spring   | BNT4391  | Clutch Cam Retainer      | BNT4519  | Screw                    |
| BNT2224  | Spool Tension Spacer | BNT4394  | Anti-Reverse Pawl Pin    | BNT4521  | Screw                    |
| BNT2361  | Drag Washer          | BNT4396  | Drive Shaft Bushing      | BNT4563  | Anti-Reverse Ratchet     |
| BNT2397  | Key Washer           | BNT4397  | Washer                   |          |                          |
| BNT2404  | Anti-Reverse Pawl    | BNT4398  | Worm Shaft               |          |                          |