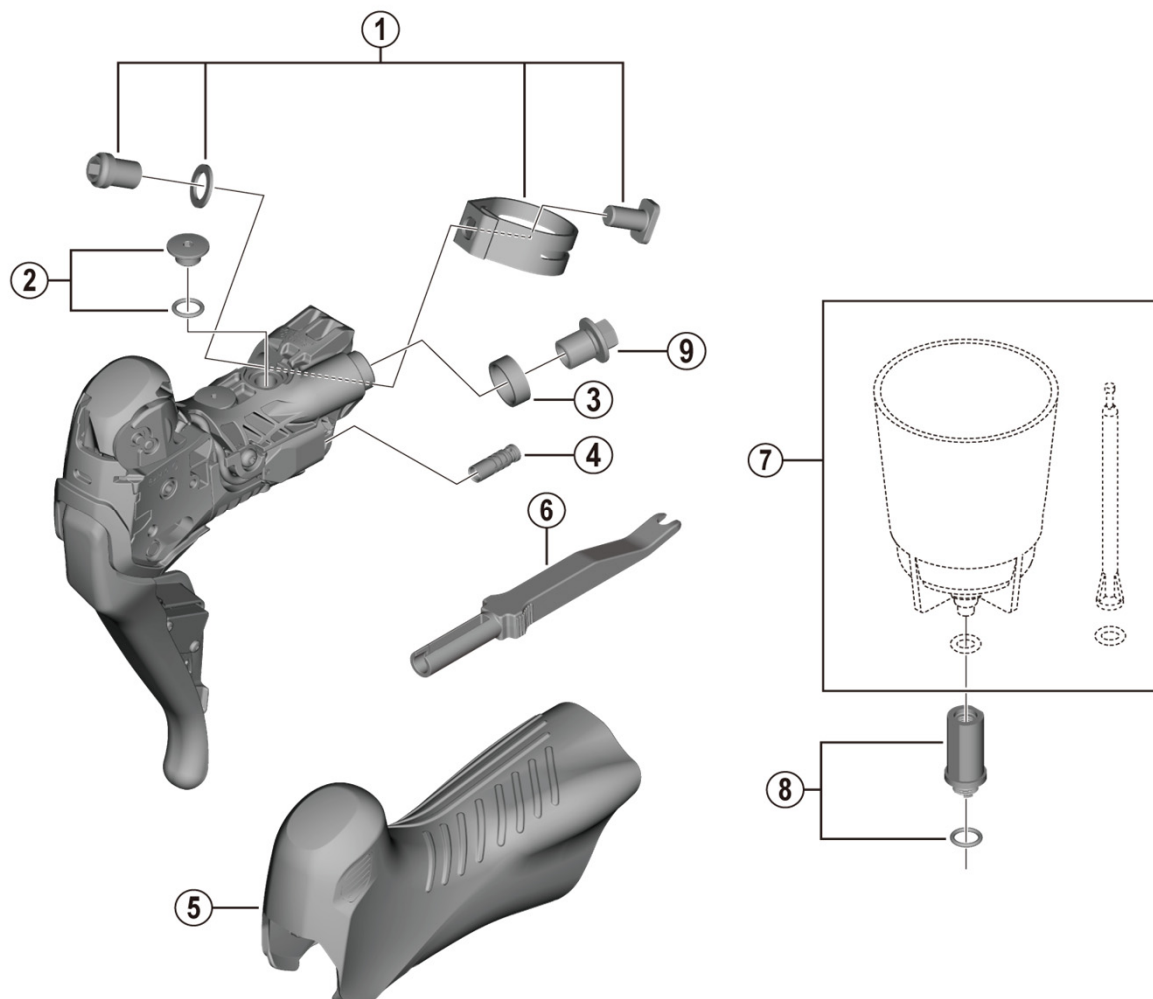


## GRX Dual Control Lever (For Disc Brake)

**ST-RX815** (2x11-speed)

ITEM NO.	SHIMANO CODE NO.	DESCRIPTION
* 1	Y0E098030	Clamp Band Unit Diameter (23.8 - 24.2 mm)
2	Y0F398030	Bleed Screw and O-Ring
3	Y0C514000	Joint Support Ring
4	Y6VE15000	Dummy Plug
5	Y0JM98010	Bracket Covers (Pair)
6	Y6VE16000	TL-EW02 Plug Tool
7	ESMDISCBP	Funnel and Oil Stopper
8	Y0C698050	Funnel Adapter and O-Ring
9	Y8RD02000	Flange Flare Nut (M9/Black)

Sep.-2020-4594A  
© Shimano Inc. I

Specifications are subject to change without notice.

**SHIMANO**