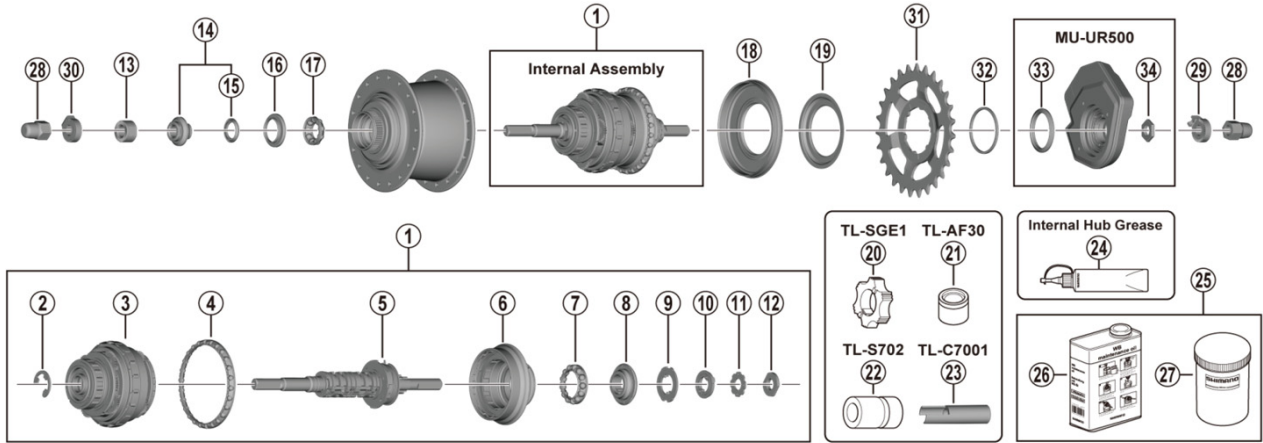


NEXUS 5-speed E-Bike Dedicated DI2 Internal Hub

SG-C7050-5D

MU-UR500 SM-C7050-5 CS-C7000



SG-C7000-5D
SG-C6061-9D

ITEM NO.	SHIMANO CODE NO.	DESCRIPTION	INTERCHANGEABILITY	
1	Y3FF98010	Internal Assembly (Axle Length 187 mm)		
2	Y3FF49000	Stop Ring Diameter (12 mm / 1.3 mm)	A	
3	Y3FF98020	Carrier Unit	A	
4	Y38X98050	Ball Retainer O (3/16" x 26)	A	A
5	Y3FF98030	Hub Axle Unit (Axle Length 187 mm)		
6	Y3FF98040	Driver Unit	A	
7	Y3FF98050	Ball Retainer A (7/32" x 13)	A	
8	Y3FF98060	Right Hand Cone w/Seal		
9	Y37S07000	Drive Plate		A
10	Y37S98050	Lock Washer		A
11	Y38F17000	Right Hand Lock Nut Washer		A
12	Y38F16000	Right Hand Lock Nut (3.7 mm)		A
13	Y35Z19000	Left Hand Serated Lock Nut (10.7 mm)	A	A
14	Y31L98040	Left Hand Cone w/Dust Cap & Seal Ring	A	A
15	Y37710000	Seal Ring	A	A
16	Y32T08100	Left Hand Inner Dust Cap	A	A
17	Y36U98030	Ball Retainer (7/32" x 9)	A	A
18	Y37G98080	Right Hand Dust Cap A w/Seal	A	A
19	Y3FF47000	Right Hand Dust Cap C	A	
20	Y20W10000	TL-SGE1 1st Gear Set Tool		A
21	Y70811000	TL-AF30 Left Hand Inner Dust Cap Installation Tool	A	A
22	Y13098022	TL-S702 Right Hand Cone Installation Tool	A	A
23	Y70821000	TL-C7001 Right Hand Cone Removal Tool	A	
24	Y04120800	Internal Hub Grease (Net. 100g)	A	A
25	Y00298010	WB maintenance oil set	A	A
26	Y00201000	WB maintenance oil (1L)	A	A
27	Y00201100	Bottle	A	A
* 28	Y31414010	Cap Nut (3/8")		
* 29	Y33Z20500	Non-turn Washer 5R (Yellow)		
* 29	Y33M39600	Non-turn Washer 6R (Silver)		
* 29	Y33M39700	Non-turn Washer 7R (Black)		
* 29	Y34R85010	Non-turn Washer 8R (Dark Blue)		
* 30	Y33M39510	Non-turn Washer 5L (Brown)		
* 30	Y33M39610	Non-turn Washer 6L (White)		
* 30	Y33M39710	Non-turn Washer 7L (Gray)		
* 30	Y34R85000	Non-turn Washer 8L (Dark Green)		
* 31	Y0FM24000	Sprocket Wheel 24T (CS-C7000)		
* 31	Y0FM01000	Sprocket Wheel 27T (CS-C7000)		
* 31	Y0FM30000	Sprocket Wheel 30T (CS-C7000)		
* 32	Y7ZP04000	Snap Ring		
* 33	Y78U00022	Motor Unit Seal		
* 34	Y707000Y0	Lock Nut		

A: Same parts.

B: Parts are usable, but differ in materials, appearance, finish, size, etc.

Absence of mark indicates non-interchangeability.

Specifications are subject to change without notice.

Mar.-2019-4454B

© Shimano Inc. I

SHIMANO