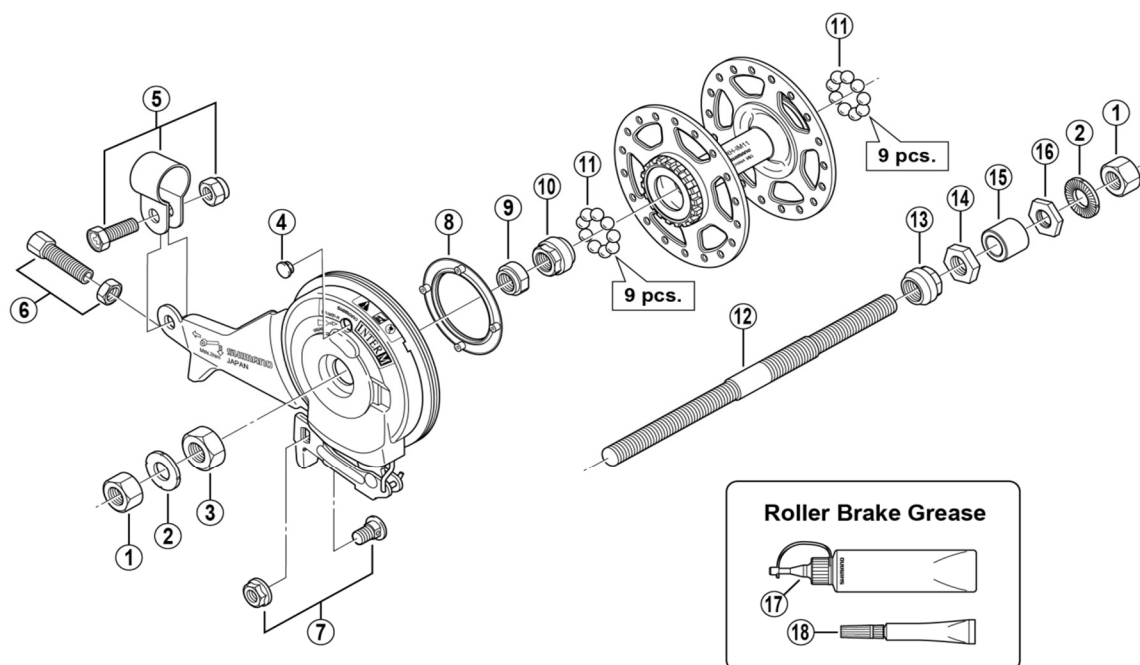


Roller Brake Hub

RH-IM11 Hub

BR-IM31-R Inter-M Brake



ITEM NO.	SHIMANO CODE NO.	DESCRIPTION	INTERCHANGEABILITY
1	Y20003080	Hub Nut (B.C.3/8" x 9 mm)	B
2	Y22006050	Washer (2 mm)	A
3	Y75V13000	Brake Unit Fixing Nut (B.C.3/8" x 8.2 mm)	A
* 4	Y75F11000	Grease Hole Cap	A
5	Y75M98050	Brake Arm Clip Unit (ø15 mm)	A
	Y33F98090	Brake Arm Clip Unit (5/8")	A
	Y75M98060	Brake Arm Clip Unit (11/16")	A
	Y33F98100	Brake Arm Clip Unit (3/4")	A
6	Y75Y98050	Brake Cable Adjusting Bolt & Nut	A
7	Y75Y98060	Inner Cable Fixing Bolt & Nut	A
8	Y75T05000	Seal Ring for Brake	A
9	Y31Z06030	Lock Nut for Left Hand Cone (B.C.3/8" x 7.1 mm)	A
10	Y31Z05000	Left Hand Cone (B.C.3/8" x 13.1 mm)	A
11	Y34T98030	Steel Ball (1/4") 18 pcs.	A
12	Y36B06000	Hub Axle (B.C.7/16", 3/8" x 180 mm)	
	Y36B06010	Hub Axle (B.C.7/16", 3/8" x 185 mm)	
	Y36B06020	Hub Axle (B.C.7/16", 3/8" x 192 mm)	
	Y36B06030	Hub Axle (B.C.7/16", 3/8" x 200 mm)	
13	Y33M37000	Right Hand Cone (B.C.7/16" x 12.5 mm)	
14	Y22005100	Right Hand Lock Nut (B.C.3/8" x 4.5 mm)	
15	Y34T05200	Right Hand Sleeve (14 mm) for 6-Speed	A
	Y34T05300	Right Hand Sleeve (16 mm) for 7-Speed	A
16	Y32138000	Right Hand Lock Nut (B.C.3/8" x 3 mm)	A
17	Y04120400	Roller Brake Grease (Net. 100g)	A
18	Y04140020	Roller Brake Grease (Net. 10g)	A

A: Same parts.

B: Parts are usable, but differ in materials, appearance, finish, size, etc.

Absence of mark indicates non-interchangeability.

Specifications are subject to change without notice.

Feb.-2018-2548C

© Shimano Inc. I

SHIMANO