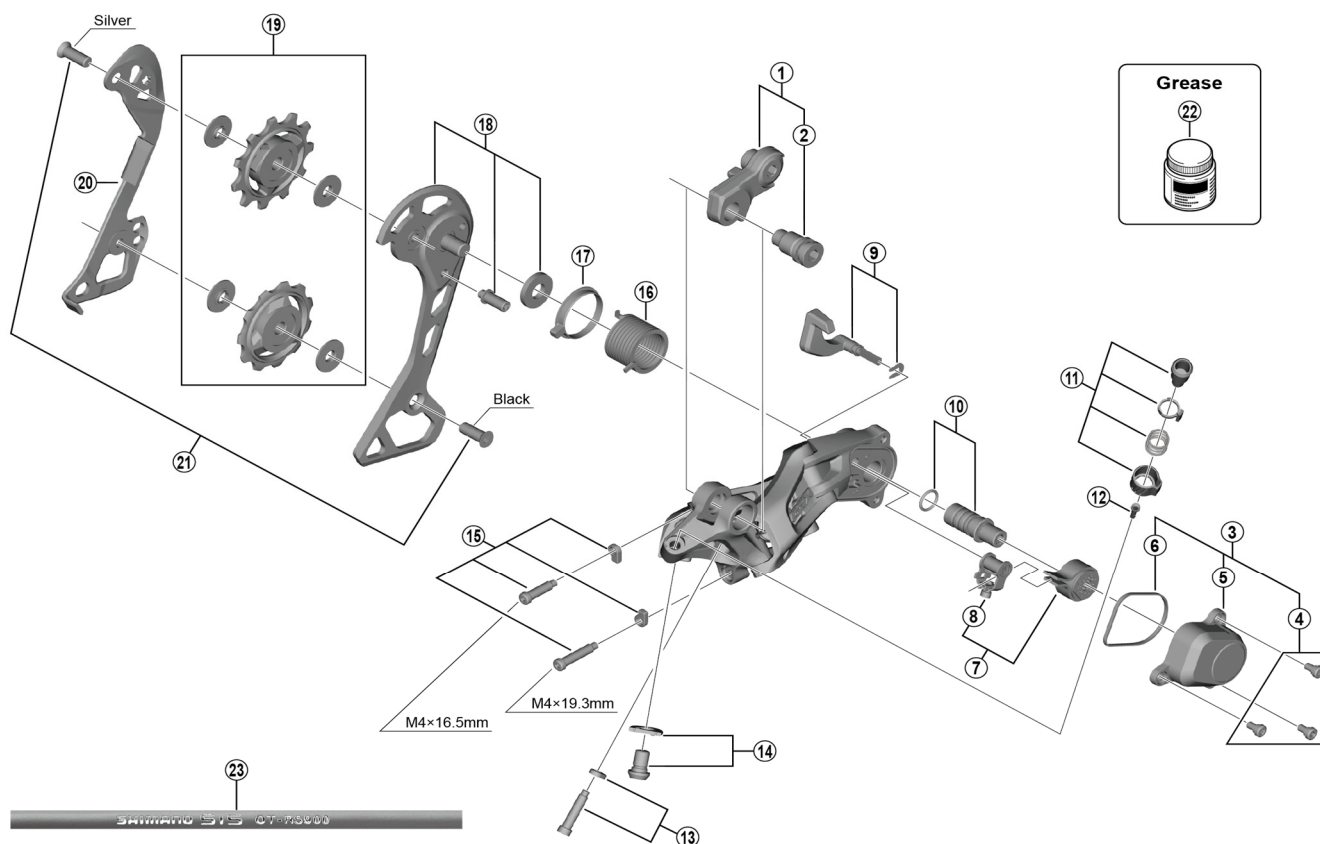


GRX Rear Derailleur (11-speed)

RD-RX812**RD-RX812-LE****Note**

There are no specific service parts for RD-RX812-LE.
RD-RX812 service parts can be used for RD-RX812-LE.

ITEM NO.	SHIMANO CODE NO.	DESCRIPTION	INTERCHANGEABILITY		
1	Y3E998020	Bracket axle unit (for normal type)	A		
2	Y3E958000	B-axle 2 (for direct mount type)	A		
3	Y3GF98010	P-cover unit	A		
4	Y5Y198070	P-cover screw set (3 pcs.)	A		
5	Y3GF41000	P-cover	A		
6	Y5RT16000	P-cover packing	A		
7	Y3GF98040	Stabilizer unit	A		
8	Y3E498040	Cam unit	A		
9	Y5YX98040	Switch lever unit and fixing plate	A		
10	Y5PV98060	P-axle and O-ring	A		
11	Y3E998030	Cable adjustment barrel unit	A		
12	Y5PV48000	Cover with tongue	A		
13	Y3E998040	End adjusting screw (M4 x 18) and plate	A		
14	Y3GF98020	Cable fixing screw and plate	A		
15	Y5YX98060	Stroke adjusting screws and plates	A		
16	Y5PV17000	P-tension spring	A		
17	Y5PV24000	P-seal ring	A		
18	Y3GF98030	Outer plate assembly	B		
19	Y3E998010	Tension and guide pulley set	A		
20	Y5RT09000	Inner plate	B		
21	Y3GE98050	Tension pulley screw (M5 x 12.45/black) and guide pulley screw (M5 x 12.45/silver)	A		
22	Y04121000	New grease for stabilizer (Net. 50 g)	A		
23	Y0BM98011	OT-RS900 (black) 240 mm x 10 pcs. (with sealed outer cap and outer cap with long tongue)	A		
	Y0BM98021	OT-RS900 (white) 240 mm x 10 pcs. (with sealed outer cap and outer cap with long tongue)	A		
	Y0BM98031	OT-RS900 (red) 240 mm x 10 pcs. (with sealed outer cap and outer cap with long tongue)	A		
	Y0BM98041	OT-RS900 (high-tech gray) 240 mm x 10 pcs. (with sealed outer cap and outer cap with long tongue)	A		

A: Same parts.

B: Parts are usable, but differ in materials, appearance, finish, size, etc.

Absence of mark indicates non-interchangeability.

Specifications are subject to change without notice.

Jun.-2022-4590A

© Shimano Inc. I

SHIMANO