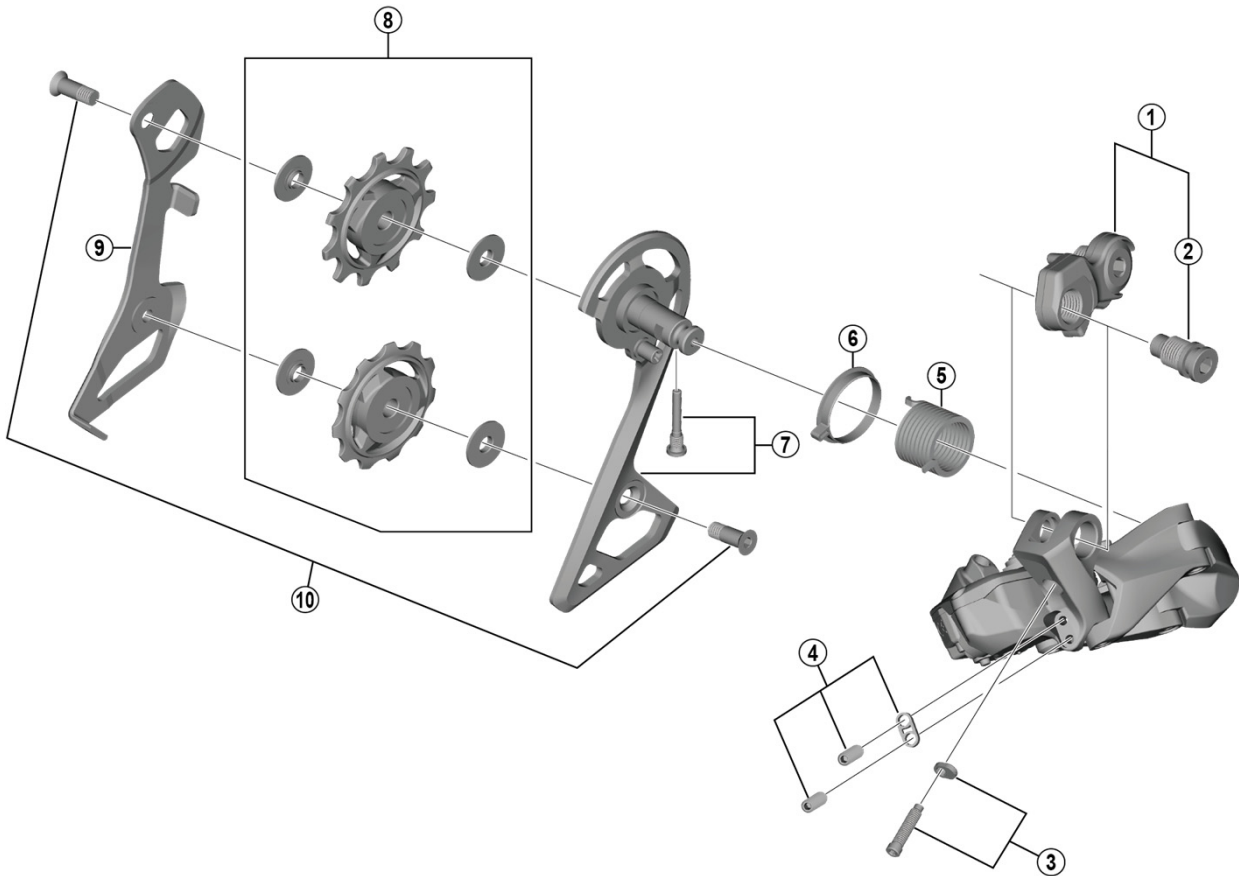


ULTEGRA Rear Derailleur
RD-R8050-SS (11-speed)



ITEM NO.	SHIMANO CODE NO.	DESCRIPTION	INTERCHANGE-ABILITY		
			RD-R9150	RD-R8000-SS	RD-R8050-GS
* 1	Y3FC98010	Bracket axle unit (for normal type)	B		A
* 2	Y3E958000	B-axle 2 (for direct mount type)	B	B	A
3	Y3HR98020	End adjusting screw and plate	B		A
4	Y3HR98030	Stroke adjusting screws and plate	B		A
5	Y5PU13100	P-tension spring	A	A	A
6	Y5PU130T0	P-seal ring	A	A	A
7	Y3HR98040	Outer plate and fixing screw	B	B	
8	Y3E998010	Tension and guide pulley set		A	A
9	Y3E906000	Inner plate	B	A	
* 10	Y3FW98090	Pulley screw (2 pcs.)		B	A

A: Same parts.

B: Parts are usable, but differ in materials, appearance, finish, size, etc.

Absence of mark indicates non-interchangeability.

Specifications are subject to change without notice.

Aug.-2021-4249A

© Shimano Inc. I

SHIMANO