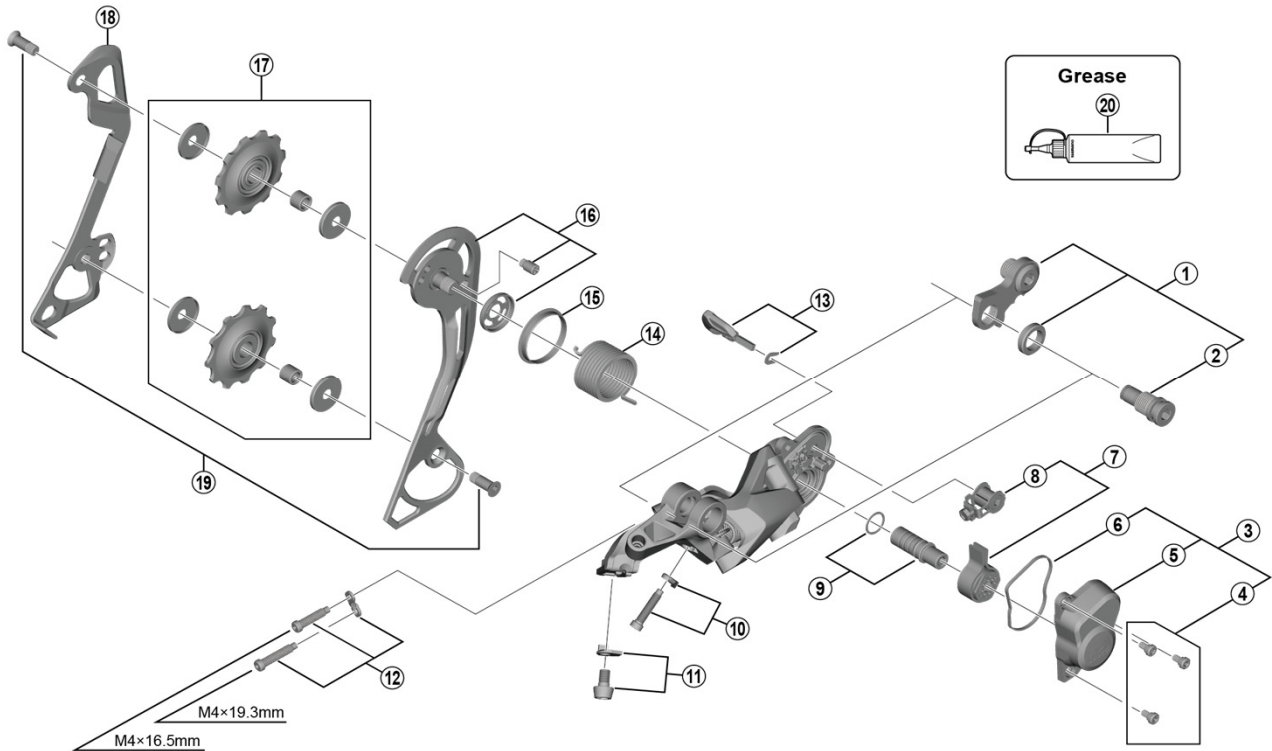


DEORE Rear Derailleur (10-speed) RD-M6000-SGS



RD-M7000-10-SGS

ITEM NO.	SHIMANO CODE NO.	DESCRIPTION	INTERCHANGEABILITY
1	Y5ZH98010	Bracket Axle Unit (for normal type)	A
2	Y50Y17000	B-Axle 2 (for Direct Mount type)	A
3	Y3E498060	P-Cover Unit	A
4	Y50J98020	P-Cover Screw Set (3 pcs.)	A
5	Y5ZH51000	P-Cover	A
6	Y5Y219000	P-Cover Packing	A
* 7	Y3GE98060	Stabilizer Unit	A
8	Y5Y198120	Cam Unit	A
9	Y5Y198040	P-Axle Unit & Washer	A
10	Y5ZH98030	End Adjust Screw (M4 x 18) & Plate	A
11	Y5X798010	Cable Fixing Screw (M5 x 8.5) & Plate	
12	Y5ZH98040	Stroke Adjusting Screws & Plate	A
13	Y3E498070	Switch Lever Unit & Fixing Plate	A
14	Y5XD19000	P-Tension Spring	A
15	Y5XD15000	P-Seal Ring	A
16	Y5ZH98050	Outer Plate Assembly (SGS)	A
17	Y3E498020	Tension & Guide Pulley Set	A
18	Y50H10000	Inner Plate (SGS)	A
19	Y50J98070	Pulley Screw (M5 x 12) 2 pcs.	A
20	Y04121000	New Grease for Stabilizer (Net. 50g)	A
	Y04120800	Grease for Stabilizer (Net. 100g)	A

A: Same parts.

B: Parts are usable, but differ in materials, appearance, finish, size, etc.

Absence of mark indicates non-interchangeability.

Specifications are subject to change without notice.

May-2020-4301B

© Shimano Inc. I

SHIMANO