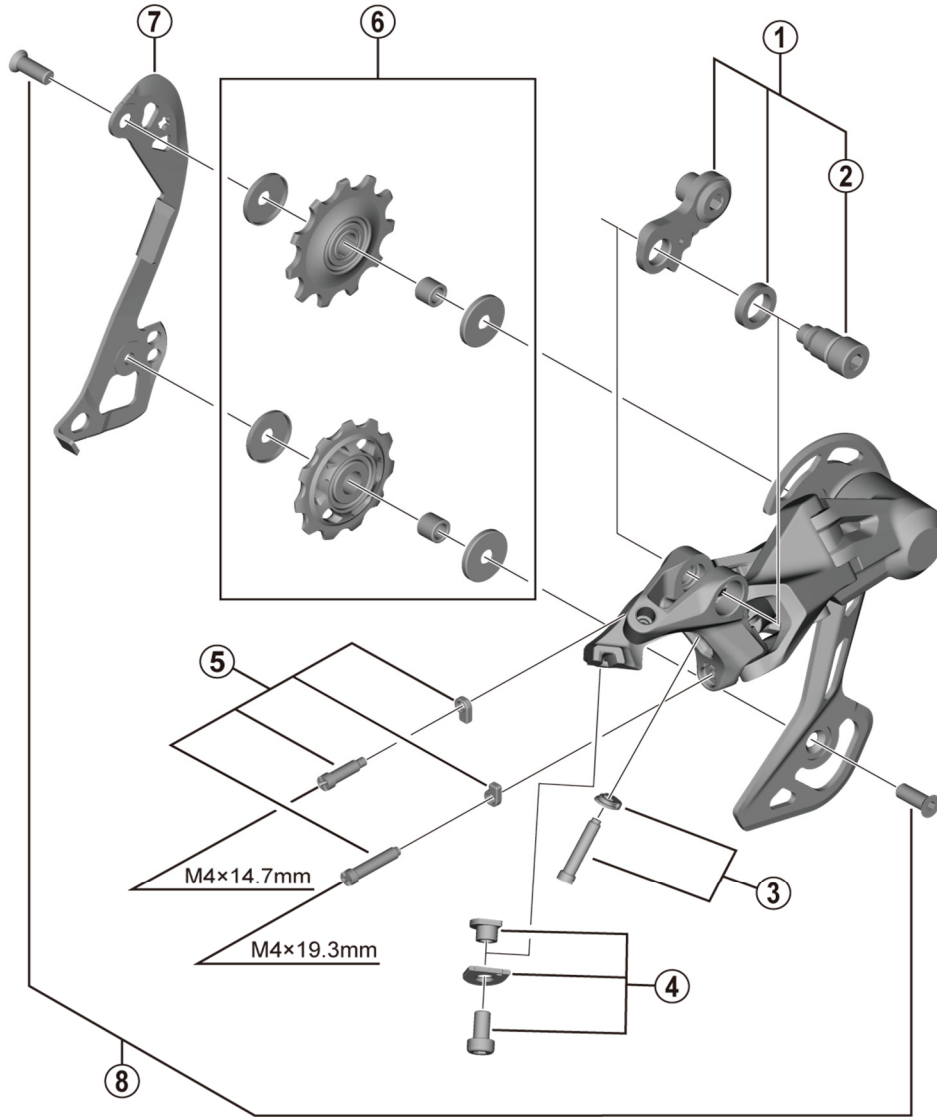


DEORE Rear Derailleur  
**RD-M4120-SGS** 11/10-speed



ITEM NO.	SHIMANO CODE NO.	DESCRIPTION	INTERCHANGEABILITY	
			RD-M5120	RD-M6000-GS
1	Y3HM98020	Mounting screw unit	A	B
2	Y3HM000F0	B-axle	A	
3	Y3HM98040	End adjust screw (M4 x 19.3) and plate	A	B
4	Y3HM98050	Cable fixing bolt unit	A	
5	Y3HM98060	Stroke adjusting screws and plate	A	B
6	Y3HM98010	Tension and guide pulley set	A	
7	Y3HM000B0	Inner plate (SGS)	A	A
8	Y3HM98080	Pulley screw (M5 x 13.7) 2 pcs.	A	B

A: Same parts.

B: Parts are usable, but differ in materials, appearance, finish, size, etc.

Absence of mark indicates non-interchangeability.

Specifications are subject to change without notice.

Mar.-2023-4674B

© Shimano Inc. I

**SHIMANO**