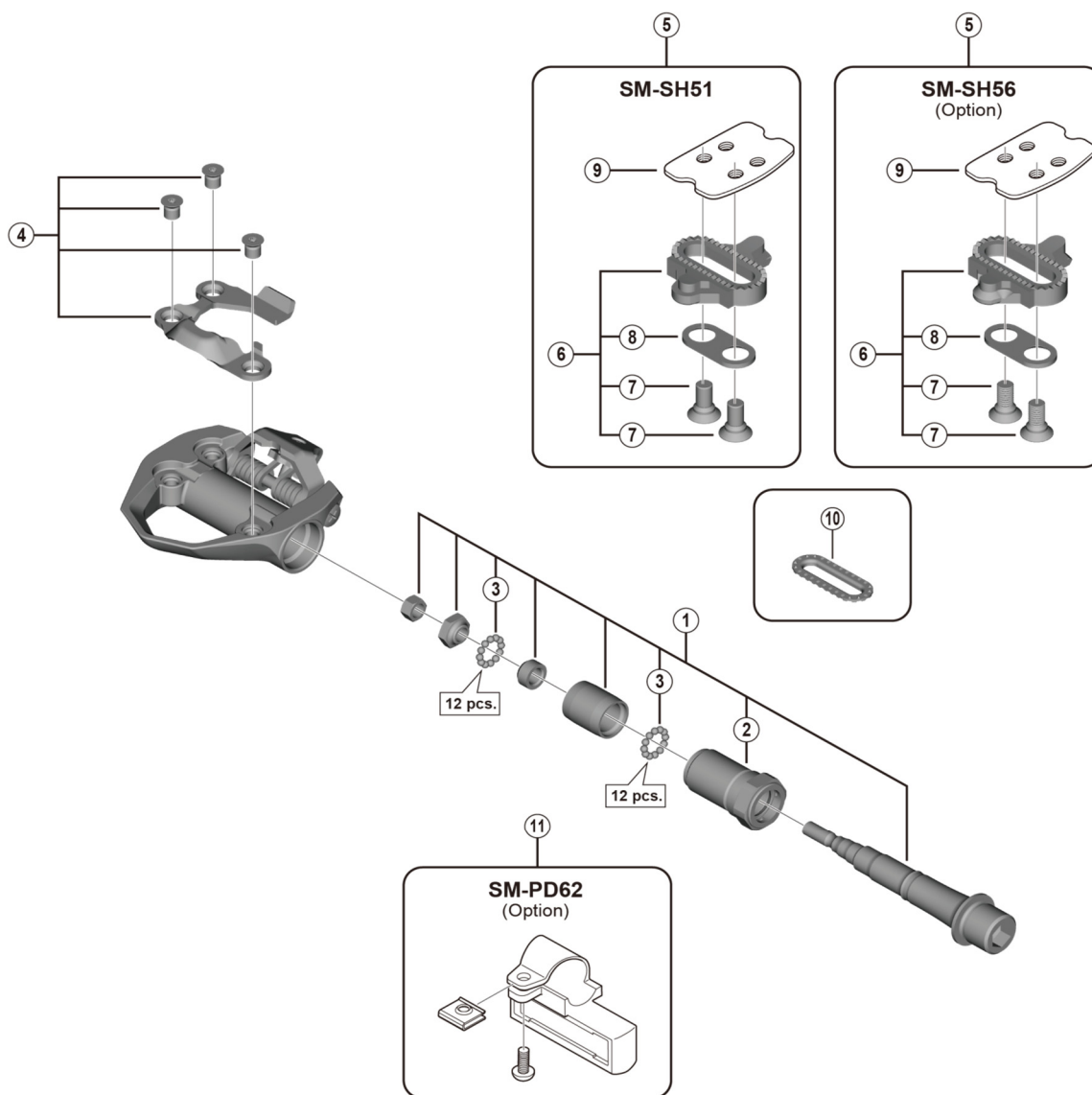


# SPD Pedals PD-ES600



PD-A600

ITEM NO.	SHIMANO CODE NO.	DESCRIPTION	INTERCHANGEABILITY
1	YL8J98010	Pedal Axle Assembly (Right / B.C.9/16" x 20T.P.I.)	
	YL8J98020	Pedal Axle Assembly (Left / B.C.9/16" x 20T.P.I.)	
2	YL8F98030	Lock Bolt (Right)	
	YL8F98040	Lock Bolt (Left)	
3	Y41N98030	Steel Ball (3/32") 62 pcs.	A
4	YL8J98030	Body Cover (Right) & Fixing Bolts (M5)	B
	YL8J98040	Body Cover (Left) & Fixing Bolts (M5)	B
5	Y42498220	SM-SH51 Cleat Set (Single Release Mode / Pair)	A
	Y41S98092	SM-SH56 Cleat Set (Multiple Release Mode / Pair)	A
6	Y42498201	SM-SH51 Cleat Set w/o Cleat Nut (Single Release Mode / Pair)	A
	Y41S98100	SM-SH56 Cleat Set w/o Cleat Nut (Multiple Release Mode / Pair)	A
7	Y41704030	Cleat Fixing Bolt (1 pc.)	A
8	Y42423000	Cleat Adapter (1 pc.)	A
9	YL0E04000	Cleat Nut (1 pc.)	A
10	YL8098030	SPD Cleat Spacer (2 pcs.)	A
11	Y46D98050	SM-PD62 Reflector Unit Standard/AS(Pair/Option)	A

A: Same parts.

B: Parts are usable, but differ in materials, appearance, finish, size, etc.

Absence of mark indicates non-interchangeability.

Specifications are subject to change without notice.

Nov.-2018-4363

© Shimano Inc. I

# SHIMANO