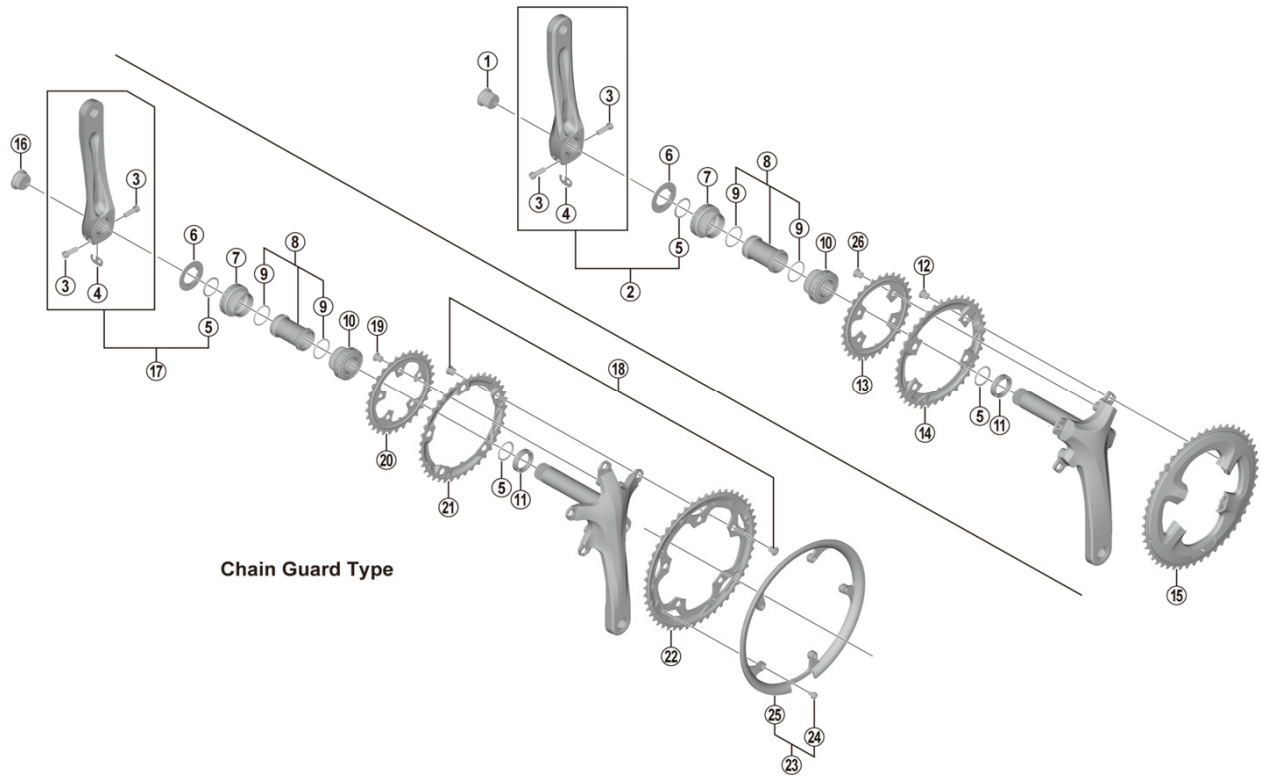


SORA Crankset

FC-R3030

BB-RS500



- Chaining teeth combinations: 50-39-30T
- Bolt circle diameter: 110 mm...(For outer gear and middle gear), 74 mm...(For inner gear)
- Bolt circle diameter (Chain Guard Type): 130 mm...(For outer gear and middle gear), 74 mm...(For inner gear)

FC-3503

ITEM NO.	SHIMANO CODE NO.	DESCRIPTION	INTERCHANGEABILITY
1	Y1P417000	Crank Arm Fixing Bolt	B
2	Y1VC98020	Left Hand Crank Arm Unit 165 mm	B
	Y1VC98030	Left Hand Crank Arm Unit 170 mm	B
	Y1VC98040	Left Hand Crank Arm Unit 175 mm	B
3	Y1GS00030	Clamp Bolt (M6 x 19)	
4	Y1GE98050	Plate	A
5	Y1F316000	Ring	A
6	Y1MD14100	Spacer	A
7	Y1RF98010	Left Hand Adapter (B.C.1.37" x 24T) English Thread (BB-RS500)	A
	Y1RF98020	Left Hand Adapter (M36 x 24T) Italian Thread (BB-RS500)	A
8	Y1RF98050	Inner Cover & O-Ring	A
9	Y1TF21000	O-Ring	A
10	Y1RF98030	Right Hand Adapter (B.C.1.37" x 24T) English Thread (BB-RS500)	A
	Y1RF98040	Right Hand Adapter (M36 x 24T) Italian Thread (BB-RS500)	A
11	Y1F913000	Spacer (6.5 mm)	A
12	Y1VD98030	Gear Fixing Bolt (M8 x 7 / 1 Unit = 4 pcs.)	
13	Y1VD30000	Chainring 30T-MR	
14	Y1VD98010	Chainring 39T-MR	
15	Y1VD98020	Chainring 50T-MR	
16	Y1KS13000	Crank Arm Fixing Bolt	A
17	Y1VC98070	Left Hand Crank Arm Unit 165 mm	A
	Y1VC98080	Left Hand Crank Arm Unit 170 mm	A
	Y1VC98090	Left Hand Crank Arm Unit 175 mm	A
18	Y1P298030	Gear Fixing Bolt (M8 x 8.5 / 1 Unit = 5 pcs.) & Nut (1 Unit = 5 pcs.)	A
19	Y1H798010	Inner Gear Fixing Bolt (M8 x 8.5 / 1 Unit = 5 pcs.)	A
20	Y1NC30000	Chainring 30T-D	A
21	Y1NC98010	Chainring 39T-D	A
22	Y1NC98030	Chainring 50T-D for Chain Guard	A
23	Y1NC98040	50T Chain Guard (1 pc.) & Fixing Bolts (1 Unit = 5 pcs.)	A
24	Y1HD98050	Chain Guard Fixing Bolt (1 Unit = 5 pcs.)	A
25	Y1ND12000	50T Chain Guard	A
26	Y1LV98060	Inner Gear Fixing Bolt (M8 x 8.5 / 1 Unit = 4 pcs.)	

A: Same parts.

B: Parts are usable, but differ in materials, appearance, finish, size, etc.

Absence of mark indicates non-interchangeability.

Specifications are subject to change without notice.

Apr.-2019-4153A

© Shimano Inc. I

SHIMANO