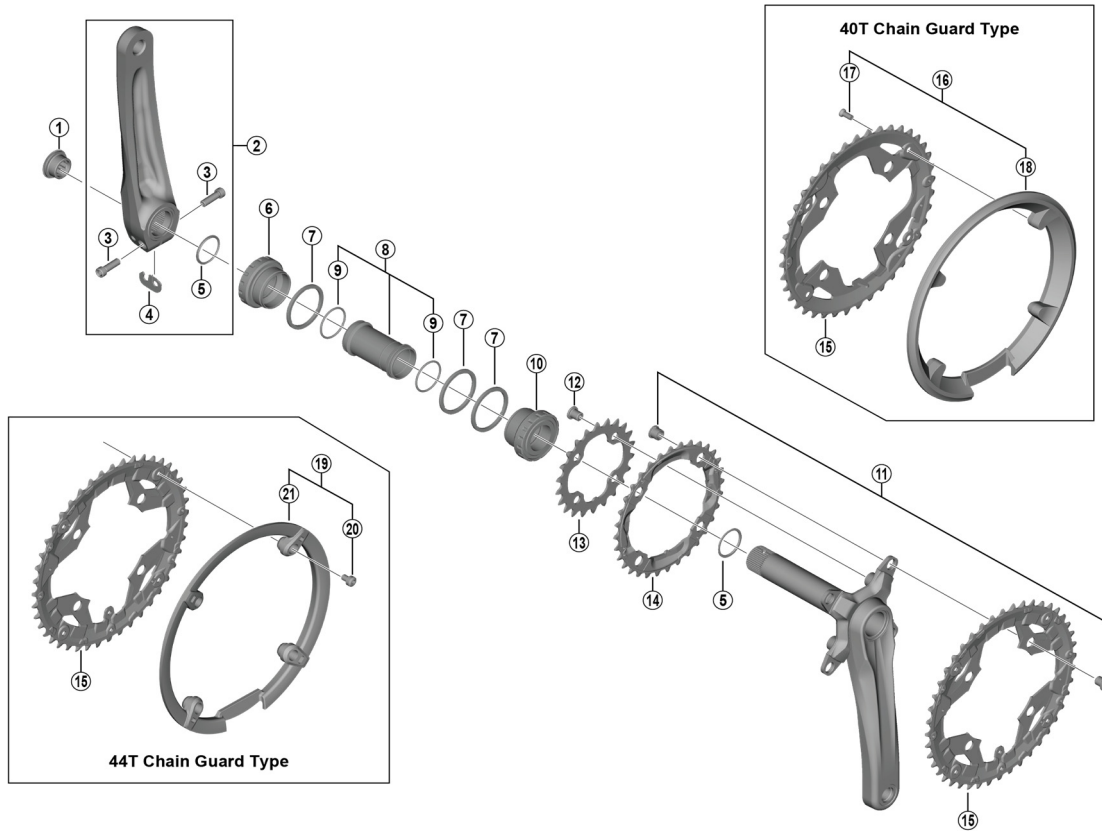


Crankset FC-MT300-3 BB-MT500



- Chaining teeth combinations: 40-30-22T / 44-32-22T
- Bolt circle diameter: 96 mm (40-30T) / 104 mm (44-32T)...(For outer gear and middle gear), 64 mm (22T)...(For inner gear)

ITEM NO.	SHIMANO CODE NO.	DESCRIPTION	INTERCHANGEABILITY		
			FC-M4050	FC-M590	SM-BB52
1	Y1F811100	Crank Arm Fixing Bolt for 40-30-22T	A	A	
	Y1P417000	Crank Arm Fixing Bolt for 44-32-22T	A	A	
2	Y0FP98010	Left Hand Crank Arm Unit 170 mm	B	B	
	Y0FP98020	Left Hand Crank Arm Unit 175 mm	B	B	
3	Y1GS00030	Clamp Bolt (M6 x 19)	A	A	
4	Y1FU98120	Plate	A	A	
5	Y1F316000	Ring	A	A	
6	Y0G698010	Left Hand Adapter (B.C.1.37" x 24T) English Thread (BB-MT500)			B
7	Y1F813000	Spacer (2.5 mm)			A
8	Y1J898060	Inner Cover & O-Ring			A
9	Y1TF21000	O-Ring			A
10	Y0G698020	Right Hand Adapter (B.C.1.37" x 24T) English Thread (BB-MT500)			B
11	Y10X98020	40-30T Double Gear Fixing Bolt (M8 x 8.5) & Nut (1 Unit = 4 sets)	A		
	Y1ME98010	44-32T Double Gear Fixing Bolt (M8 x 8.5) & Nut (1 Unit = 4 sets)		B	
12	Y1LV98060	Gear Fixing Bolt (M8 x 8.5 / 1 Unit = 4 pcs.)	A	A	
13	Y1PK22000	Chainring 22T-AX for 40-30-22T	A		
	Y1LD22000	Chainring 22T for 44-32-22T		B	
14	Y1PL98040	Chainring 30T-AX for 40-30-22T	A		
	Y1LD98080	Chainring 32T for 44-32-22T		B	
15	Y1RT98010	Chainring 40T-AX for 40-30-22T	A		
	Y0FN98020	Chainring 44T for 44-32-22T		B	
	Y0FN98030	Chainring 44T for 44-32-22T Chain Guard		B	
16	Y0FP98030	40T Chain Guard (1 pc.) & Fixing Screws (1 Unit = 4 pcs.)	B		
17	Y1N098090	40T Chain Guard Fixing Screw (1 Unit = 4 pcs.)	A		
18	Y1WP16000	40T Chain Guard	B		
19	Y0FN98040	44T Chain Guard (1 pc.) & Fixing Screws (1 Unit = 4 pcs.)		A	
20	Y1M098260	44T Chain Guard Fixing Screw (4 pcs.)		A	
21	Y1GX14000	44T Chain Guard		A	

A: Same parts.

B: Parts are usable, but differ in materials, appearance, finish, size, etc.

Absence of mark indicates non-interchangeability.

Specifications are subject to change without notice.

May-2018-4432

© Shimano Inc. I

SHIMANO