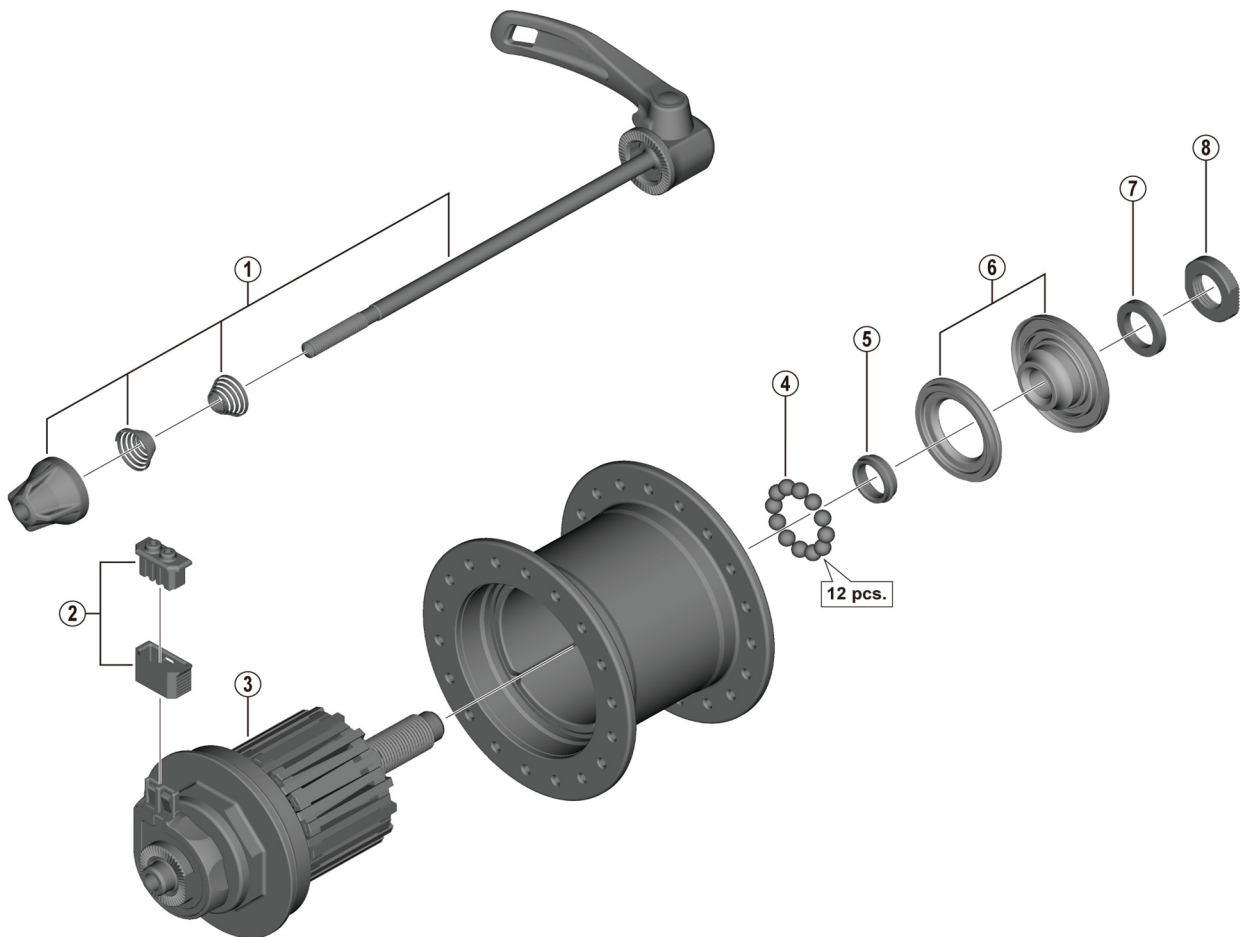


ALIVIO Hub Dynamo
DH-T4000-1N 6V-1.5W



ITEM NO.	SHIMANO CODE NO.	DESCRIPTION	INTERCHANGE-ABILITY		
			B	A	
1	Y29C98010	Complete quick release 133 mm	B		
2	Y2SS98030	Connector cap and cover	A	A	
3	Y29L98010	Internal assembly (black coating / axle length 108 mm)			
	Y29L98020	Internal assembly (silver coating / axle length 108 mm)			
4	Y00091210	Steel ball (3/16") 20 pcs.	A	A	
5	Y2ZW20000	Grease guard	A		
* 6	Y29L98030	Seal ring and cone (M11 x 13.45 mm) with seal support			
* 7	Y2SS21020	Left hand spacer (2.5 mm)			
8	Y3BT04200	Serrated lock nut	A		

A: Same parts.

B: Parts are usable, but differ in materials, appearance, finish, size, etc.

Absence of mark indicates non-interchangeability.

Specifications are subject to change without notice.

DH-3N31-QR

DH-C3000-1N

Mar.-2022-3811A

© Shimano Inc. I

SHIMANO