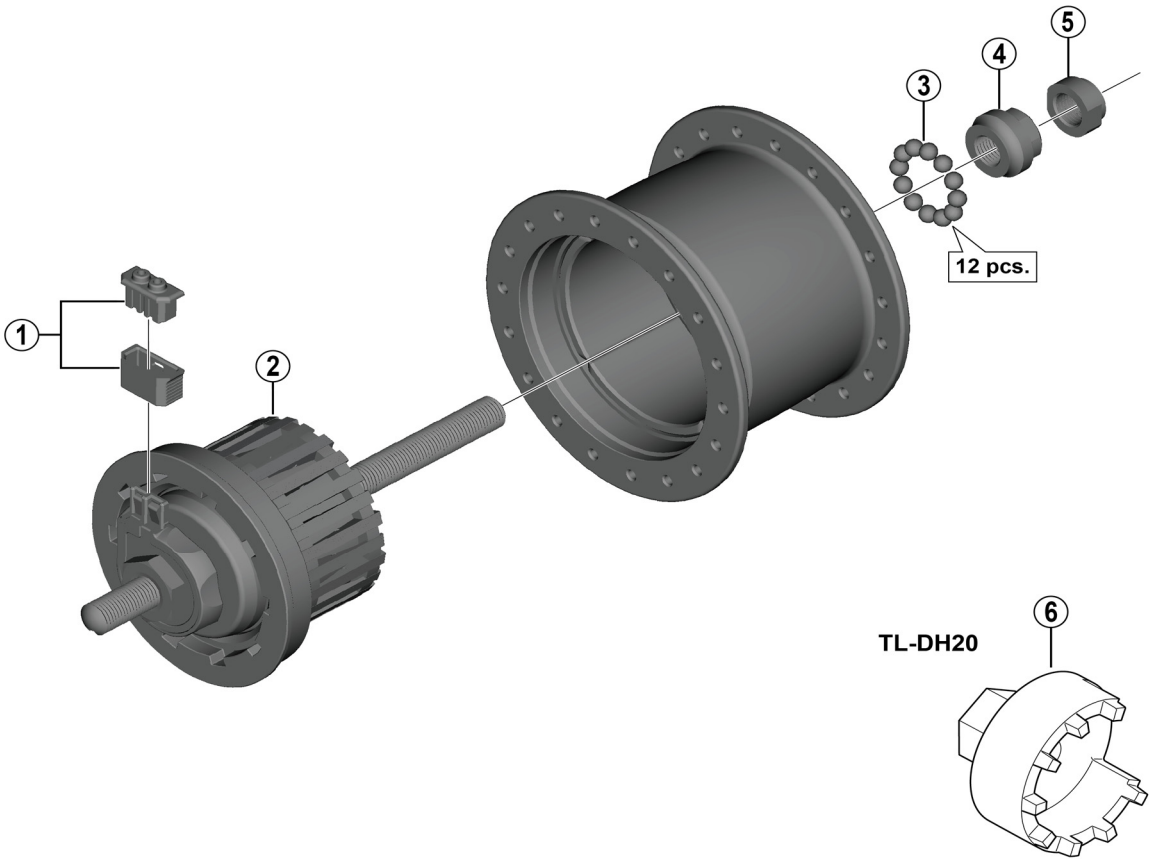


NEXUS Hub Dynamo

DH-C6000-1R 6V-1.5W / Hub Roller Brake Compatible



ITEM NO.	SHIMANO CODE NO.	DESCRIPTION	INTERCHANGE-ABILITY		
1	Y2SS98030	Connector cap and cover	A		
2	Y29H98010	Internal assembly (silver / axle length 140 mm)			
	Y29H98020	Internal assembly (black / axle length 140 mm)			
3	Y00091210	Steel ball (3/16") 20 pcs.	A		
4	Y29H04000	Left hand cone (M9 x 12 mm)	A		
5	Y22V0400R	Left hand cone lock nut (M9 x 7.1 mm)	A		
* 6	Y20W01000	TL-DH20 Hub cap removal tool	A		

A: Same parts.

B: Parts are usable, but differ in materials, appearance, finish, size, etc.

Absence of mark indicates non-interchangeability.

May-2023-3736A

© Shimano Inc. I

Specifications are subject to change without notice.