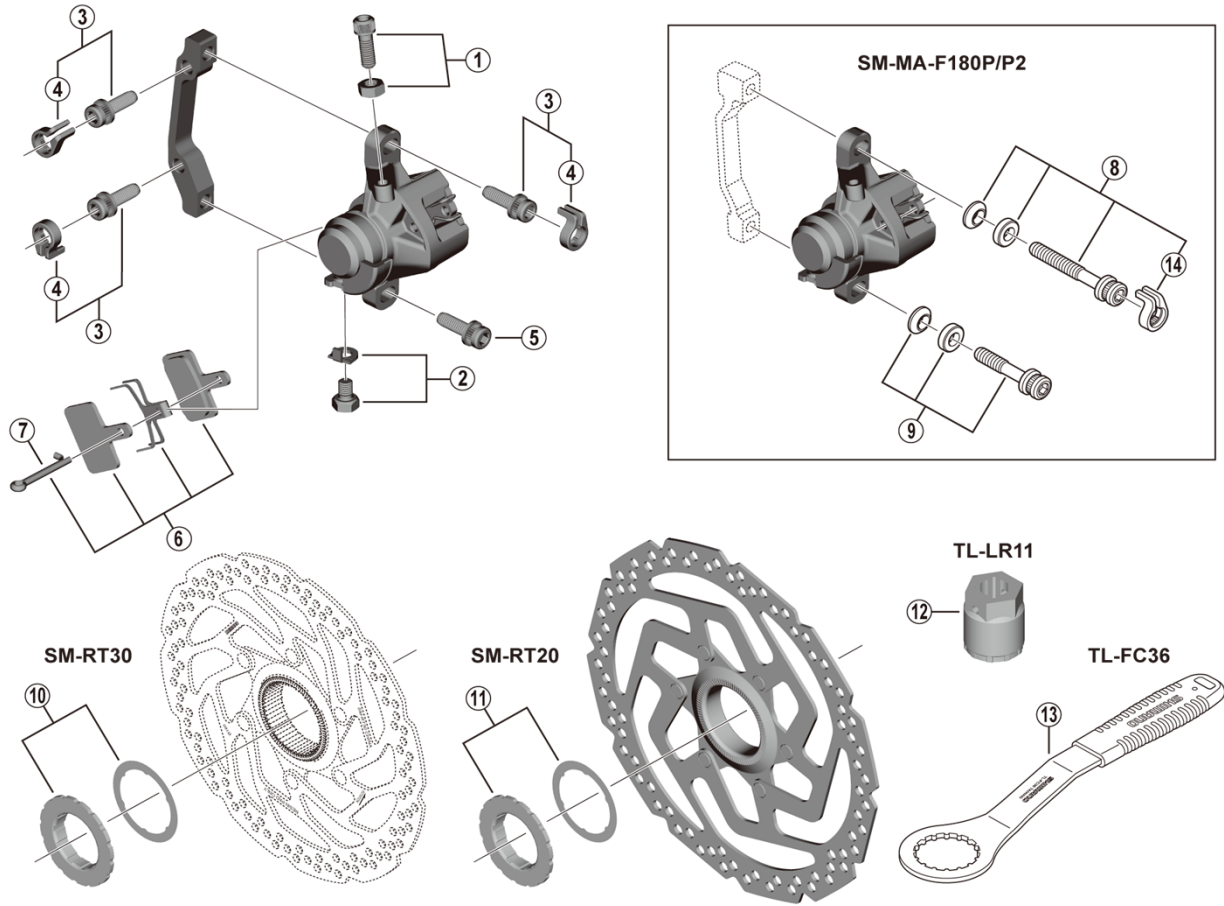


Tourney TX Disc Brake
BR-TX805 Brake Caliper
SM-RT30 **SM-RT20** Disc Rotor



ITEM NO.	SHIMANO CODE NO.	DESCRIPTION	INTERCHANGEABILITY	
1	Y8JW98010	Cable adjusting bolt and nut	A	
2	Y8JW98020	Cable fixing screw (M6 x 9) and plate	A	
3	Y2F398020	Caliper fixing screw (M6 x 18.7) and snap ring	A	
4	Y2RT06000	Snap ring	A	
5	Y8C509020	Caliper fixing screw (M6 x 18.7)	A	
* 6	EBPB03SRESINA	B03S Resin pad and spring with split pin 3 type	A	
7	Y8C505000	Split pin	A	
8	Y2RT98020	Caliper fixing screw unit (M6 x 37.9)		
9	Y8G498030	Caliper fixing screw unit (M6 x 32.1)	A	
10	Y8JX98020	Lock ring (black) and washer		
11	Y8PW98020	Lock ring and washer	A	
12	Y8PW04100	TL-LR11 Lock ring removal tool		
13	Y13098000	TL-FC36 Lock ring removal tool	A	
14	Y2RT07000	Snap ring		

A: Same parts.

B: Parts are usable, but differ in materials, appearance, finish, size, etc.

Absence of mark indicates non-interchangeability.

Specifications are subject to change without notice.

BR-M375

Oct.-2020-3753F

© Shimano Inc. I

SHIMANO