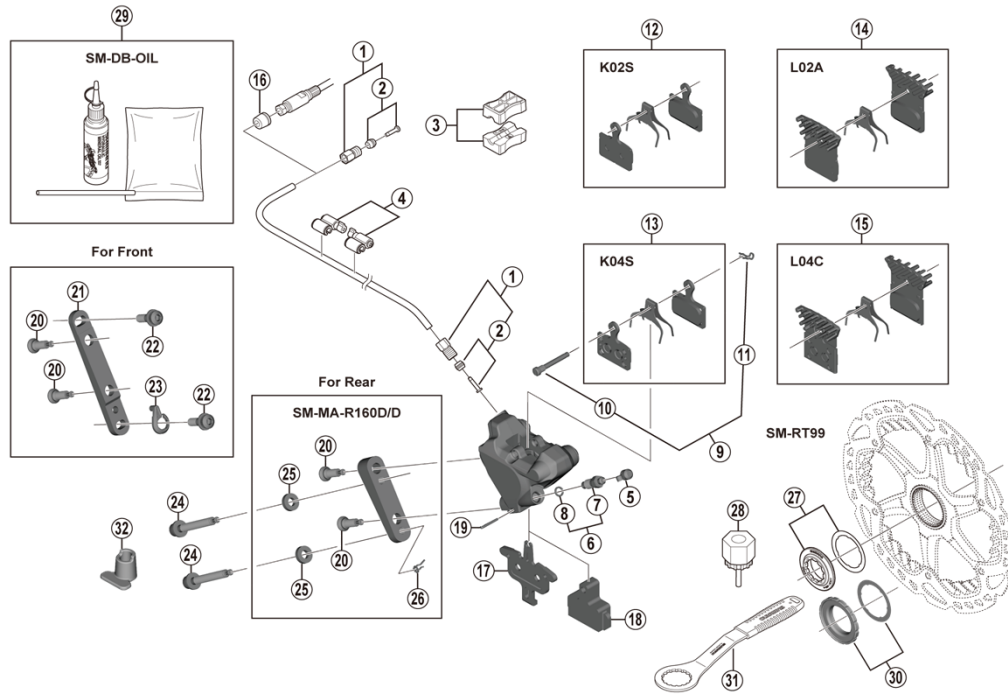


Disc Brake  
**BR-RS805** Brake Caliper  
**SM-RT99** Disc Rotor

**SM-BH59** Brake Hose



BR-RS785  
 BR-RS305

ITEM NO.	SHIMANO CODE NO.	DESCRIPTION	INTERCHANGEABILITY	
1	Y8AL98020	Flare Nut Unit	A	A
2	Y8H298040	Olive & Connector Insert	A	A
3	Y8H198030	TL-BH61 Shimano original tool (2 pcs.)	A	A
4	Y83098040	SM-HANG Hose Supporter A & B	A	A
5	Y8B214000	Bleed Nipple Cap		A
6	Y8CL98050	Bleed Nipple & Seal Ring		A
* 7	Y8CL24200	Bleed Nipple		
8	Y8B511001	O-Ring for Bleed Nipple	A	A
9	Y8J798060	Pad Axle & Snap Retainer	A	A
10	Y8J710000	Pad Axle	A	A
11	Y8J716000	Snap Retainer	A	A
12	Y8N398010	Resin Pad (K02S) & Spring		A
13	Y8N398020	Metal Pad (K04S) & Spring		A
14	Y8N398030	Resin Pad (L02A) w/Fin & Spring		A
15	Y8N398040	Metal Pad (L04C) w/Fin & Spring		A
16	Y8H802000	Hose Cover for easy hose joint system, not used with easy hose joint direct system		A
17	Y8N218000	Pad Spacer		A
18	Y8N219000	Bleeding Spacer		A
19	Y8N207000	Screw Fixing Pin		A
20	Y8N206000	Caliper Fixing Screw B		A
21	Y8N230000	Front Caliper Mount Bracket		A
22	Y8N204000	Caliper Fixing Screw A		A
23	Y8N205000	Snap Ring		A
24	Y8N208000	Caliper Fixing Screw C for 10 mm Rear mount thickness		A
	Y8N208050	Caliper Fixing Screw C for 15 mm Rear mount thickness		A
	Y8N208010	Caliper Fixing Screw C for 20 mm Rear mount thickness		A
	Y8N208020	Caliper Fixing Screw C for 25 mm Rear mount thickness		A
	Y8N208030	Caliper Fixing Screw C for 30 mm Rear mount thickness		A
	Y8N208040	Caliper Fixing Screw C for 35 mm Rear mount thickness		A
25	Y8NU02000	Washer for R160 Adapter		A
26	Y8NU03000	Snap Retainer		A
27	Y8K198010	Lock Ring & Washer	A	A
28	Y12009230	TL-LR15 Lock Ring Removal Tool	A	A
29	Y83998010	Mineral Oil Bleed Kit (50 ml)	A	A
30	Y26L98030	Lock Ring & Washer (External spline type)	A	A
31	Y13098000	TL-FC36 Lock Ring Removal Tool	A	A
* 32	Y8N221000	Screw Length Selector		

A: Same parts.

B: Parts are usable, but differ in materials, appearance, finish, size, etc.

Absence of mark indicates non-interchangeability.

Specifications are subject to change without notice.

Feb.-2020-3852D

© Shimano Inc. I

**SHIMANO**