

## Disc Brake

**BR-RS785**

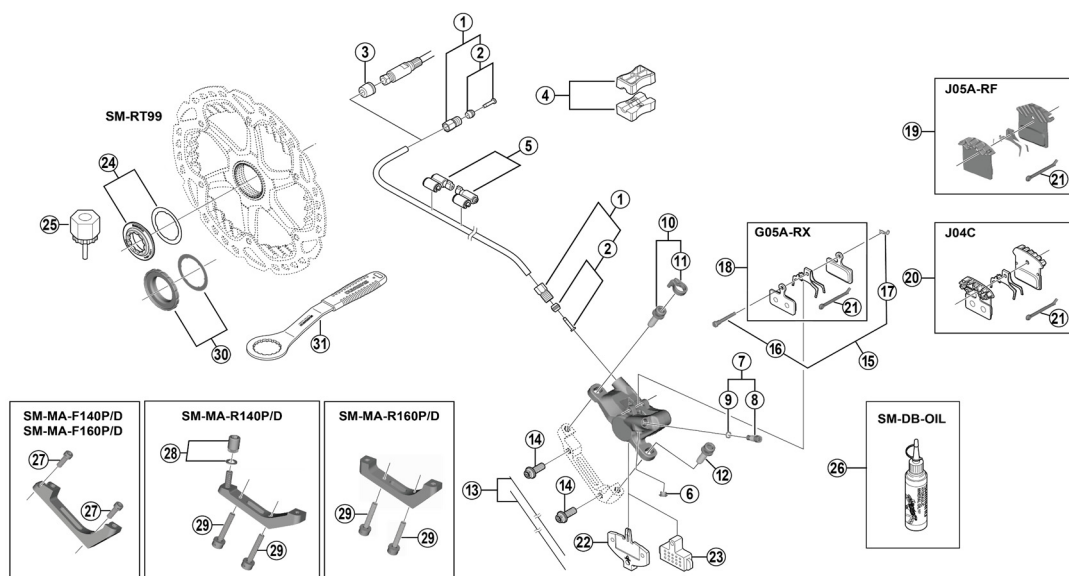
Brake Caliper

**SM-BH59**

Brake Hose

**SM-RT99**

Disc Rotor



ITEM NO.	SHIMANO CODE NO.	DESCRIPTION	INTERCHANGE-ABILITY		
1	Y8AL98020	Flare nut unit			
2	Y8H298040	Olive and connector insert			
3	Y8H802000	Hose cover for easy hose joint system, not used with easy hose joint direct system	A		
4	Y8H198030	TL-BH61 Shimano original tool (2 pcs.)	A		
5	Y83098040	SM-HANG Hose supporter A and B	A		
6	Y88F06000	Bleed boss cap			
7	Y8LS98030	Bleed screw and nipple seal			
8	Y8VZ07000	Bleed screw			
9	Y8B511001	Bleed nipple seal	A		
10	Y8LS98020	Caliper fixing screw (M6 x 18.7) and snap ring	B		
11	Y8C511000	Snap ring	A		
12	Y8LS05000	Caliper fixing screw (M6 x 18.7)	B		
13	Y8B298010	Wire (2 pcs.)	A		
14	Y8J721000	Caliper fixing screw (M6 x 15.2)	A		
15	Y8J798060	Pad axle and snap retainer	A		
16	Y8J710000	Pad axle	A		
17	Y8J716000	Snap retainer	A		
*	EBPG05ARXA	G05A-RX Resin pad and spring with split pin (pair)			
*	Y2R298010				
*	EBPG05ARXBS				
*	Y2R298011				
*	EBPG05ARXCS	G05A-RX Resin pad and spring with split pin (25 pairs)			
*	Y2R298012				
*	EBPJ05ARFA	J05A-RF Resin pad with fin and spring with split pin (pair)			
*	Y2R298020				
*	EBPJ05ARFBS				
*	Y2R298021	J05A-RF Resin pad with fin and spring with split pin (25 pairs)			
*	IBPJ04CMFA	J04C Metal pad with fin and spring with split pin (pair)	B		
*	Y8LW98030				
21	Y8DB06100	Split pin			
22	Y8J709000	Pad spacer	A		
23	Y8J712000	Bleeding spacer	A		
24	Y8K198010	Lock ring and washer	A		
25	Y12009230	TL-LR15 Lock ring removal tool	A		
*	Y83998020	Mineral oil (100 ml)	A		
*	Y83998030	Mineral oil (500 ml)	A		
27	Y81741100	Converter fixing screw (M5 x 14)			
28	Y81798020	Caliper fixing nut and washer			
29	Y81743100	Converter fixing screw (M5 x 16.8) for 10 mm rear mount thickness			
	Y81743150	Converter fixing screw (M5 x 21.8) for 15 mm rear mount thickness			
	Y81743200	Converter fixing screw (M5 x 26.8) for 20 mm rear mount thickness			
	Y81743250	Converter fixing screw (M5 x 31.8) for 25 mm rear mount thickness			
	Y81743300	Converter fixing screw (M5 x 36.8) for 30 mm rear mount thickness			
	Y81743350	Converter fixing screw (M5 x 41.8) for 35 mm rear mount thickness			
30	Y26L98030	Lock ring and washer (externally serrated type)			
31	Y13098000	TL-FC36 Lock ring removal tool			

A: Same parts.

B: Parts are usable, but differ in materials, appearance, finish, size, etc.

Absence of mark indicates non-interchangeability.

Specifications are subject to change without notice.

Jul.-2022-3743G

© Shimano Inc. I

**SHIMANO**