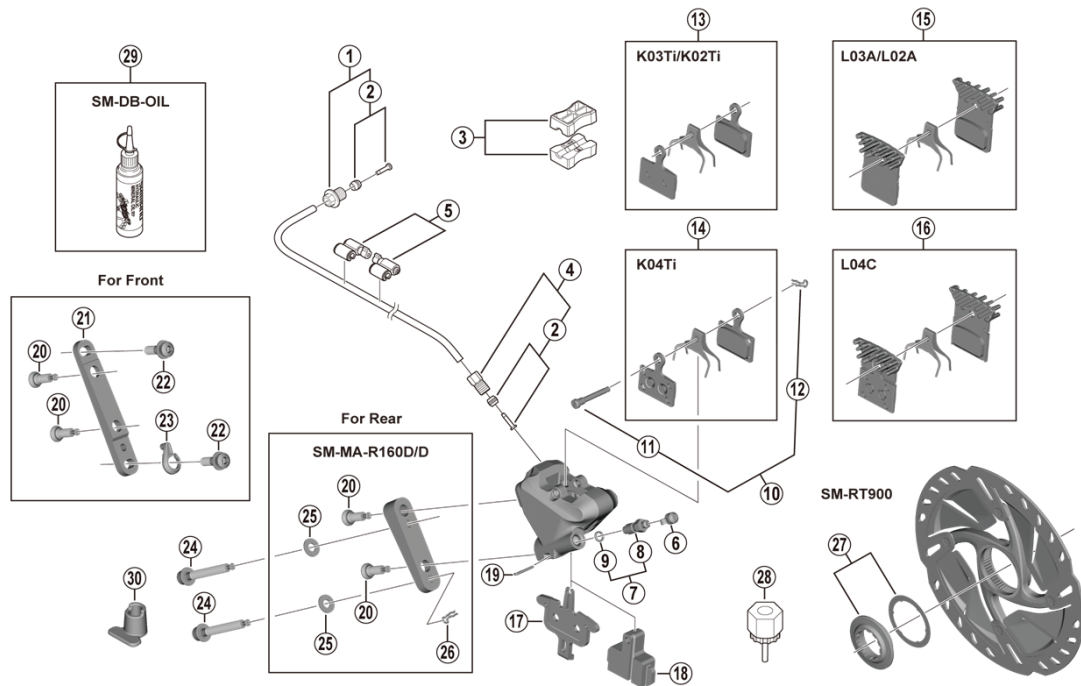


DURA-ACE Disc Brake

**BR-R9170** Brake Caliper  
**SM-RT900** Disc Rotor

**SM-BH90-JK-SSR** Brake Hose  
**SM-BH90-JK-SS** Brake Hose



ITEM NO.	SHIMANO CODE NO.	DESCRIPTION
1	<b>Y8RD98010</b>	Flange Flare Nut Unit (M9/Black) for ST-R9120/R9170
	<b>Y8RD98020</b>	Flare Nut Unit (M8/Silver) for ST-R9180
2	<b>Y8JA98020</b>	Olive & Connector Insert
3	<b>Y8H198030</b>	TL-BH61 Shimano original tool (2 pcs.)
4	<b>Y8JA98010</b>	Flare Nut Unit (M8/Black)
5	<b>Y83098040</b>	SM-HANG Hose Supporter A & B
6	<b>Y8B214000</b>	Bleed Nipple Cap
7	<b>Y8CL98050</b>	Bleed Nipple & Seal Ring
8	<b>Y8CL24200</b>	Bleed Nipple
9	<b>Y8B511001</b>	O-Ring for Bleed Nipple
10	<b>Y8PU98030</b>	Pad Axle & Snap Retainer
11	<b>Y8LV08000</b>	Pad Axle
12	<b>Y8J716000</b>	Snap Retainer
13	<b>Y1XC98010</b>	Resin Pad (K03Ti) & Spring
	<b>Y8PU98010</b>	Resin Pad (K02Ti) & Spring
14	<b>Y8PU98020</b>	Metal Pad (K04Ti) & Spring
15	<b>Y8PU98040</b>	Resin Pad (L03A) w/Fin & Spring
	<b>Y8N398030</b>	Resin Pad (L02A) w/Fin & Spring
16	<b>Y8N398040</b>	Metal Pad (L04C) w/Fin & Spring
17	<b>Y8N218000</b>	Pad Spacer
18	<b>Y8N219000</b>	Bleeding Spacer
19	<b>Y8N207000</b>	Screw Fixing Pin
20	<b>Y8N206000</b>	Caliper Fixing Screw B
	<b>Y8N230000</b>	Front Caliper Mount Bracket
	<b>Y8PU07000</b>	Caliper Fixing Screw A
23	<b>Y8N205000</b>	Snap Ring
24	<b>Y8PU08010</b>	Caliper Fixing Screw C for 20 mm Rear mount thickness
	<b>Y8PU08020</b>	Caliper Fixing Screw C for 25 mm Rear mount thickness
	<b>Y8PU08030</b>	Caliper Fixing Screw C for 30 mm Rear mount thickness
25	<b>Y8NU02000</b>	Washer for R160 Adapter
26	<b>Y8NU03000</b>	Snap Retainer
27	<b>Y8PV98010</b>	Lock Ring & Washer
28	<b>Y12009230</b>	TL-LR15 Lock Ring Removal Tool
* 29	<b>Y83998020</b>	Mineral Oil (100 ml)
* 29	<b>Y83998030</b>	Mineral Oil (500 ml)
30	<b>Y8N221000</b>	Screw Length Selector

Apr.-2020-4074D

© Shimano Inc. I

Specifications are subject to change without notice.

**SHIMANO**