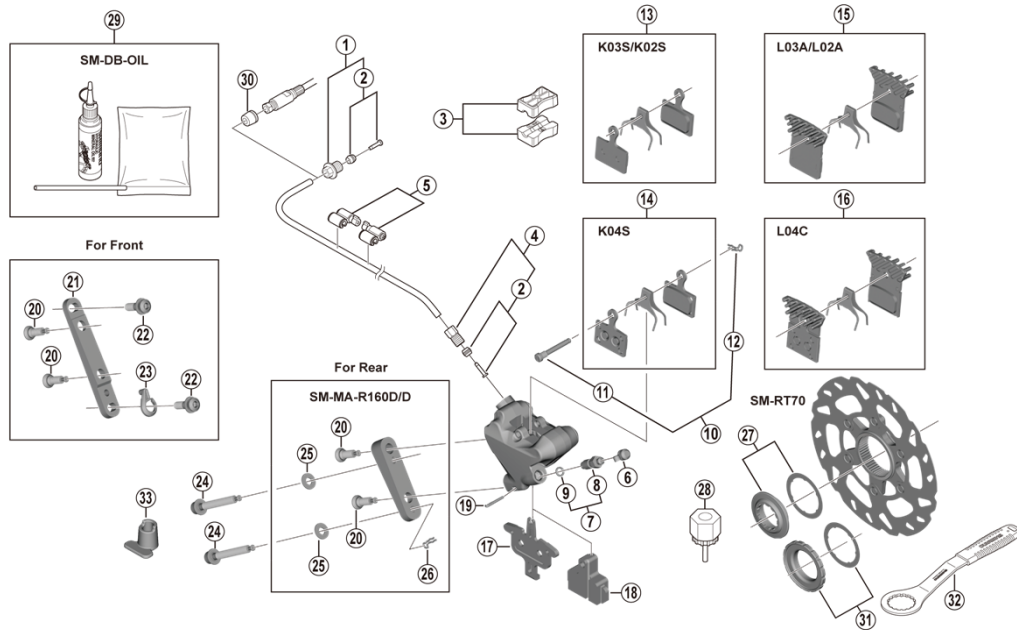


SHIMANO 105 Disc Brake
BR-R7070 Brake Caliper
SM-RT70 Disc Rotor

SM-BH90-JK-SSR Brake Hose
SM-BH90-JK-SS Brake Hose



ITEM NO.	SHIMANO CODE NO.	DESCRIPTION
1	Y8RD98010	Flange Flare Nut Unit (M9/Black)
2	Y8JA98020	Olive & Connector Insert
3	Y8H198030	TL-BH61 Shimano original tool (2 pcs.)
4	Y8JA98010	Flare Nut Unit (M8/Black)
5	Y83098040	SM-HANG Hose Supporter A & B
6	Y8B214000	Bleed Nipple Cap
7	Y8CL98050	Bleed Nipple & Seal Ring
8	Y8CL24200	Bleed Nipple
9	Y8B511001	O-Ring for Bleed Nipple
10	Y8J798060	Pad Axle & Snap Retainer
11	Y8J710000	Pad Axle
12	Y8J716000	Snap Retainer
13	Y8Y898010	Resin Pad (K03S) & Spring
14	Y8N398010	Resin Pad (K02S) & Spring
14	Y8N398020	Metal Pad (K04S) & Spring
15	Y8PU98040	Resin Pad (L03A) w/Fin & Spring
15	Y8N398030	Resin Pad (L02A) w/Fin & Spring
16	Y8N398040	Metal Pad (L04C) w/Fin & Spring
17	Y8N218000	Pad Spacer
18	Y8N219000	Bleeding Spacer
19	Y8N207000	Screw Fixing Pin
20	Y8N206000	Caliper Fixing Screw B
21	Y8N230000	Front Caliper Mount Bracket
22	Y8N204000	Caliper Fixing Screw A
23	Y8N205000	Snap Ring
24	Y8N208000	Caliper Fixing Screw C for 10 mm Rear mount thickness
24	Y8N208050	Caliper Fixing Screw C for 15 mm Rear mount thickness
24	Y8N208010	Caliper Fixing Screw C for 20 mm Rear mount thickness
24	Y8N208020	Caliper Fixing Screw C for 25 mm Rear mount thickness
24	Y8N208030	Caliper Fixing Screw C for 30 mm Rear mount thickness
24	Y8N208040	Caliper Fixing Screw C for 35 mm Rear mount thickness
25	Y8NU02000	Washer for R160 Adapter
26	Y8NU03000	Snap Retainer
27	Y8P898010	Lock Ring & Washer
28	Y12009230	TL-LR15 Lock Ring Removal Tool
29	Y83998010	Mineral Oil Bleed Kit (50 ml)
30	Y8H802000	Hose Cover for easy hose joint system, not used with easy hose joint direct system
31	Y26L98030	Lock Ring & Washer (External spline type)
32	Y13098000	TL-FC36 Lock Ring Removal Tool
* 33	Y8N221000	Screw Length Selector