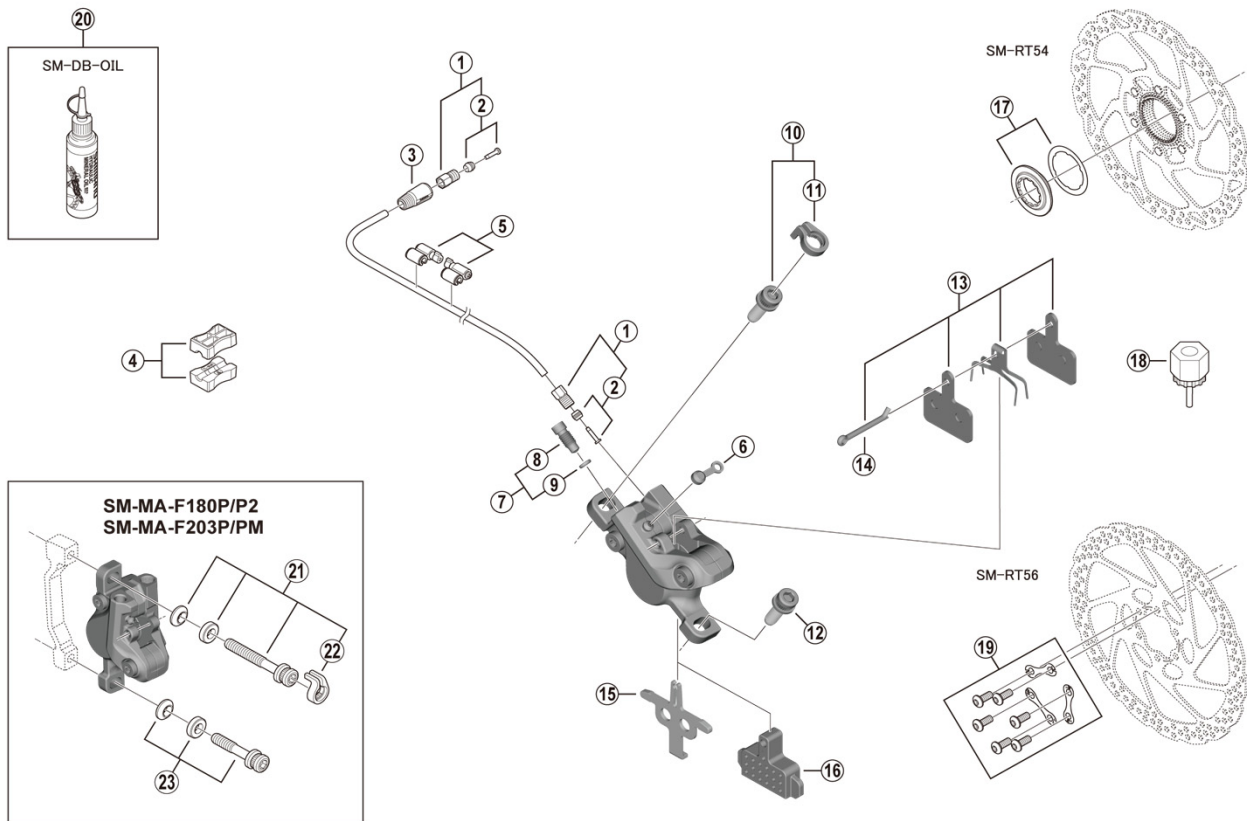


Disc Brake
BR-MT500 Brake Caliper
SM-BH59 Brake Hose

SM-RT54 Disc Rotor/Center Lock
SM-RT56 Disc Rotor/6-Bolt



ITEM NO.	SHIMANO CODE NO.	DESCRIPTION
1	Y8AL98020	Flare nut unit
2	Y8H298040	Olive and connector insert
3	Y8H203210	Cover
4	Y8H198030	TL-BH61 Shimano original tool (2 pcs.)
5	Y83098040	SM-HANG Hose supporter A and B
6	Y8B214000	Bleed nipple cap
7	Y8LS98030	Bleed screw and O-ring
8	Y8VZ07000	Bleed screw
9	Y8B511001	O-ring
10	Y2F398020	Caliper fixing screw (M6 x 18.7) and snap ring
11	Y2RT06000	Snap ring
12	Y8C509020	Caliper fixing screw (M6 x 18.7)
13	EBPB03SRESINA	B03S Resin pad and spring with split pin 3 type
14	Y8DB06100	Split pin
* 15	Y8PE03000	Pad spacer
16	Y8FZ05000	Bleeding spacer
17	Y8KU98010	Lock ring (black) and washer
18	Y12009230	TL-LR15 Lock ring removal tool
19	Y8KT98010	Rotor fixing screw and lock washer
20	Y83998020	Mineral oil (100 ml)
	Y83998030	Mineral oil (500 ml)
21	Y2RT98020	Caliper fixing screw unit (M6 x 37.9) for SM-MA-F180P/P2
	Y2RT98030	Caliper fixing screw unit (M6 x 40.2) for SM-MA-F203P/PM
22	Y2RT07000	Snap ring
23	Y8G498030	Caliper fixing screw unit (M6 x 32.1) for SM-MA-F180P/P2
	Y8J498020	Caliper fixing screw unit (M6 x 34.4) for SM-MA-F203P/PM

Nov.-2020-4181C
 © Shimano Inc. I