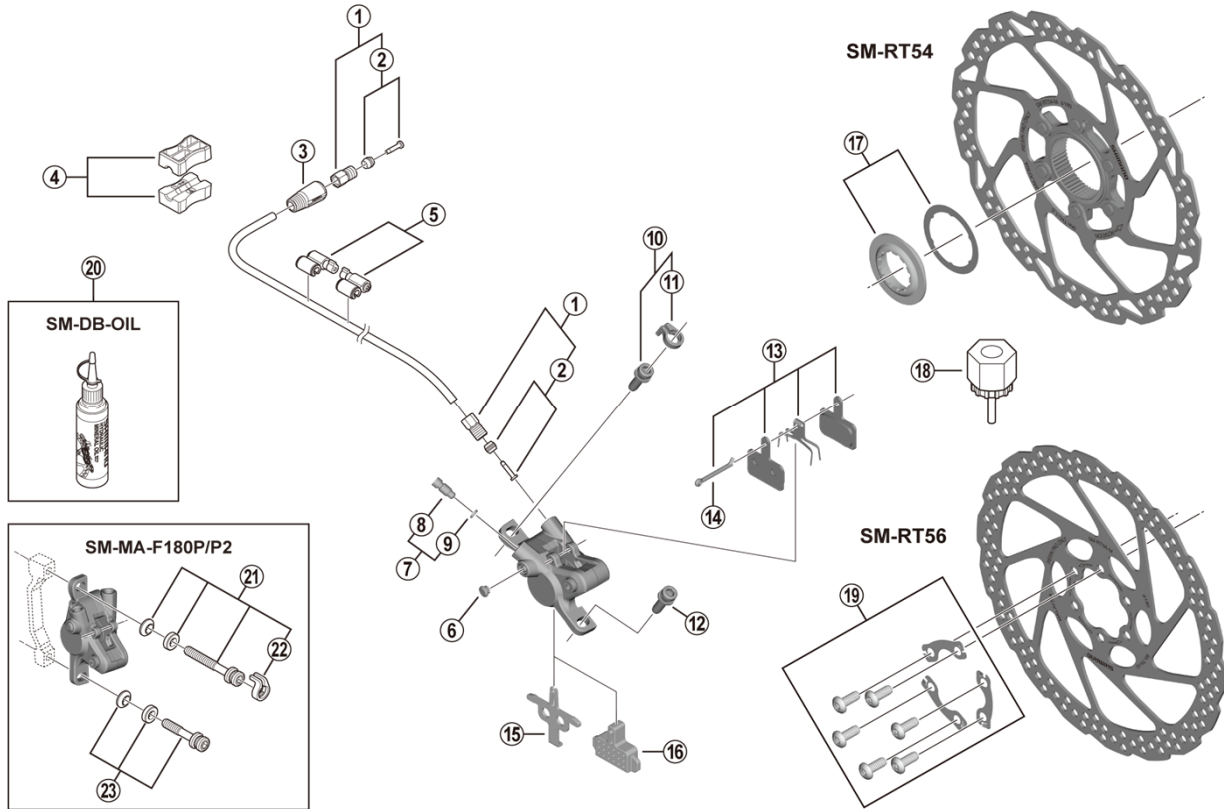


Disc Brake
BR-MT400 Brake Caliper
SM-BH59 Brake Hose

SM-RT54 Disc Rotor/Center Lock
SM-RT56 Disc Rotor/6-Bolt



ITEM NO.	SHIMANO CODE NO.	DESCRIPTION
1	Y8M998010	Flare Nut Unit
2	Y8H298040	Olive and Connector Insert
3	Y8WM14000	Cover
4	Y8H198030	TL-BH61 Shimano original tool (2 pcs.)
5	Y83098040	SM-HANG Hose Supporter A and B
6	Y88F06000	Bleed Boss Cap
7	Y8VZ98010	Bleed Screw and O-Ring
8	Y8VZ07000	Bleed Screw
9	Y8B511000	O-Ring
* 10	Y2F398020	Caliper Fixing Screw (M6 x 18.7) and Snap Ring
* 11	Y2RT06000	Snap Ring
12	Y8C509020	Caliper Fixing Screw (M6 x 18.7)
* 13	EBPB01SRESINA	B01S Resin Pad and Spring with Split Pin 3 Type
14	Y8DB06100	Split Pin
15	Y8PE03000	Pad Spacer
16	Y8FZ05000	Bleeding Spacer
* 17	Y8KU98010	Lock Ring (Black) and Washer
18	Y12009230	TL-LR15 Lock Ring Removal Tool
19	Y8KT98010	Rotor Fixing Screw and Lock Washer
* 20	Y83998020	Mineral Oil (100 ml)
* 20	Y83998030	Mineral Oil (500 ml)
* 21	Y2RT98020	Caliper Fixing Screw Unit (M6 x 37.9)
* 22	Y2RT07000	Snap Ring
23	Y8G498030	Caliper Fixing Screw Unit (M6 x 32.1)

Aug.-2020-4351A
 © Shimano Inc. I

Specifications are subject to change without notice.

SHIMANO