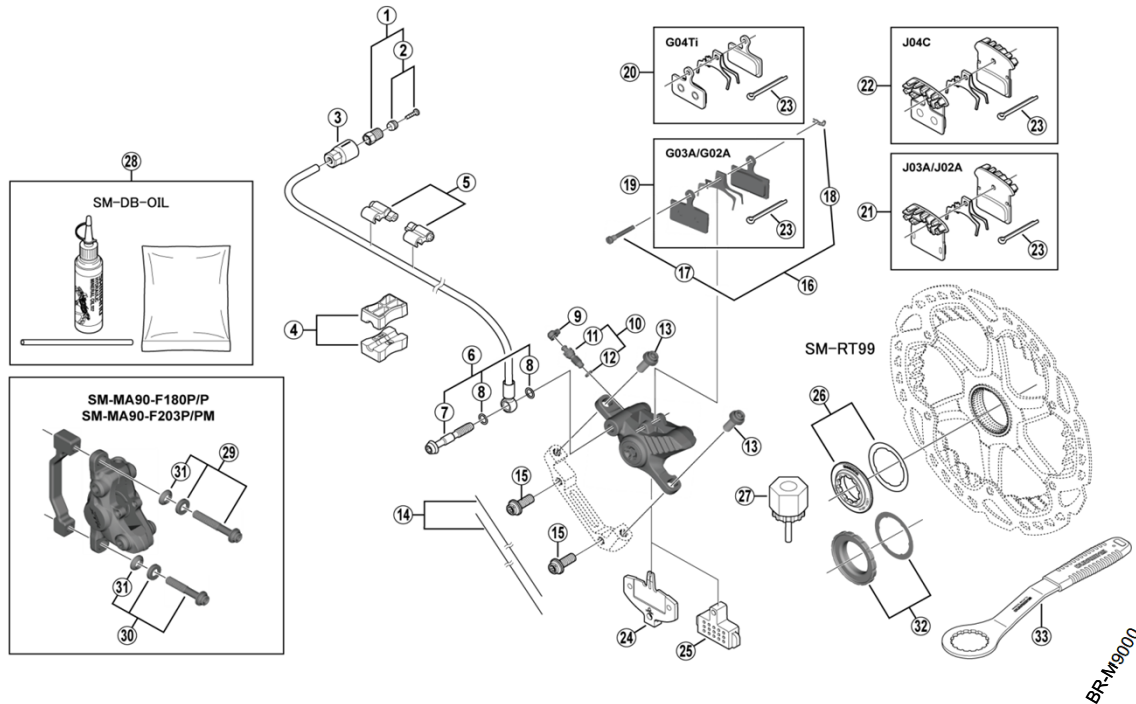


XTR Disc Brake
BR-M9020 Brake Caliper
SM-BH90-SBM Brake Hose

SM-RT99 Disc Rotor/Center Lock



ITEM NO.	SHIMANO CODE NO.	DESCRIPTION	INTERCHANGEABILITY
1	Y8JA98010	Flare Nut Unit	A
2	Y8JA98020	Olive & Connector Insert	A
3	Y8JA07000	Cover	A
4	Y8H198030	TL-BH61 Shimano original tool (2 pcs.)	A
5	Y83098040	SM-HANG Hose Supporter A & B	A
6	Y8LF98030	Banjo Screw & O-Ring	A
7	Y8JA09000	Banjo Screw	A
8	Y8SY28000	O-Ring	A
9	Y8B214000	Bleed Nipple Cap	A
* 10	Y8CL98050	Bleed Nipple & Seal Ring	
* 11	Y8CL24200	Bleed Nipple	
12	Y8B511001	O-Ring for Bleed Nipple	A
13	Y8LF08000	Caliper Fixing Screw (M6 x 14.6)	A
14	Y8B298010	Wire (2 pcs.)	A
15	Y8J721000	Caliper Fixing Screw (M6 x 15.2)	A
16	Y8J798060	Pad Axle & Snap Retainer	
17	Y8J710000	Pad Axle	
18	Y8J716000	Snap Retainer	A
* 19	Y8LV98010	Resin Pad (G03A) & Spring w/Split Pin	
	Y8LW98020	Resin Pad (G02A) & Spring w/Split Pin	A
20	Y8LW98010	Metal Pad (G04TI) & Spring w/Split Pin	A
* 21	Y8Z298010	Resin Pad (J03A) w/Fin & Spring w/Split Pin	
	Y8LW98040	Resin Pad (J02A) w/Fin & Spring w/Split Pin	A
22	Y8LW98030	Metal Pad (J04C) w/Fin & Spring w/Split Pin	A
23	Y8DB06100	Split Pin	A
24	Y8J709000	Pad Spacer	A
25	Y8J712000	Bleeding Spacer	A
26	Y8K198010	Lock Ring & Washer	A
27	Y12009230	TL-LR15 Lock Ring Removal Tool	A
28	Y83998010	Mineral Oil Bleed Kit (50 ml)	A
29	Y8LF98040	Caliper Fixing Screw Unit (M6 x 36.3) for SM-MA90-F180P/P	A
	Y8JB98010	Caliper Fixing Screw Unit (M6 x 38.6) for SM-MA90-F203P/PM	A
30	Y8LF98050	Caliper Fixing Screw Unit (M6 x 30.5) for SM-MA90-F180P/P	A
	Y8JB98020	Caliper Fixing Screw Unit (M6 x 32.8) for SM-MA90-F203P/PM	A
31	Y8LF12000	R-Washer A	A
* 32	Y26L98030	Lock Ring & Washer (External spline type)	A
* 33	Y13098000	TL-FC36 Lock Ring Removal Tool	A

A: Same parts.

B: Parts are usable, but differ in materials, appearance, finish, size, etc.

Absence of mark indicates non-interchangeability.

Specifications are subject to change without notice.

Jan.-2020-3782C

© Shimano Inc. I

SHIMANO