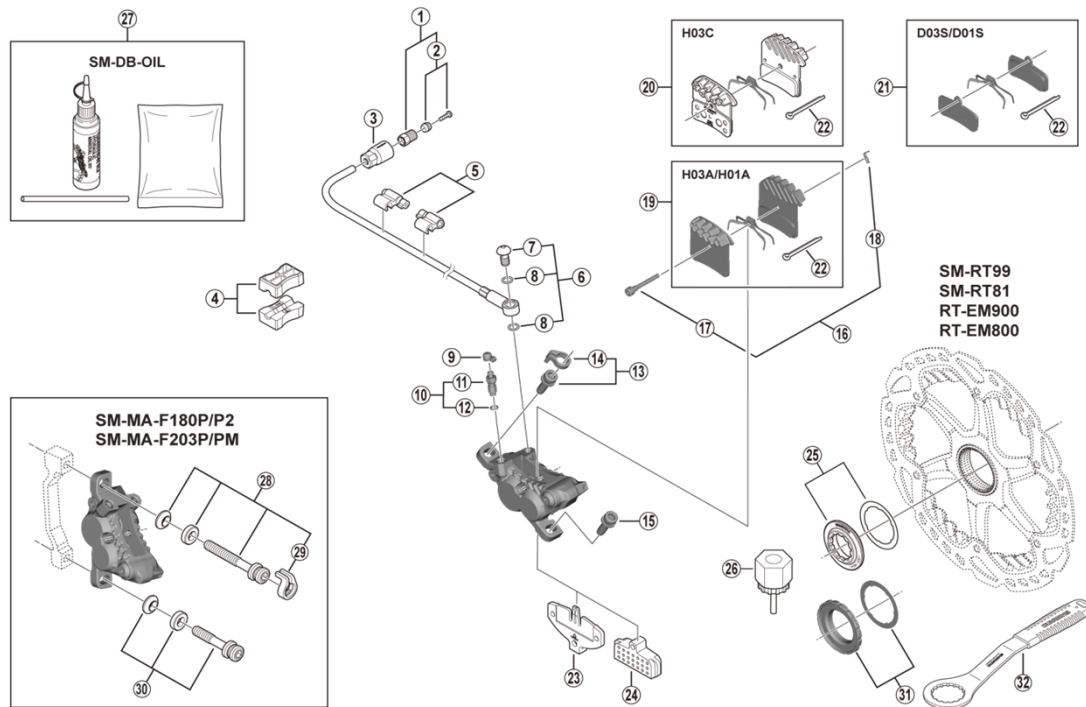


DEORE XT Disc Brake

BR-M8020 Brake Caliper

SM-BH90-SBLS Brake Hose

SM-RT99/SM-RT81/RT-EM900/RT-EM800 Disc Rotor



ITEM NO.	SHIMANO CODE NO.	DESCRIPTION
1	Y8JA98010	Connecting Bolt Unit
2	Y8JA98020	Olive & Connector Insert
3	Y8JA07000	Cover
4	Y8H198030	TL-BH61 Shimano original tool (2 pcs.)
5	Y83098040	SM-HANG Hose Supporter A & B
6	Y8H098010	Banjo Bolt & O-Ring
7	Y8H001500	Banjo Bolt
8	Y8SY28000	O-Ring
9	Y8B214000	Bleed Nipple Cap
10	Y8CL98050	Bleed Nipple & Seal Ring
11	Y8CL24200	Bleed Nipple
12	Y8B511001	O-Ring for Bleed Nipple
13	Y8DS98010	Caliper Fixing Bolt (M6 x 18.7) & Snap Ring
14	Y8C511000	Snap Ring
15	Y8C509020	Caliper Fixing Bolt (M6 x 18.7)
16	Y8JZ98010	Pad Axle & Snap Ring
17	Y8JZ05000	Pad Axle
18	Y8J716000	Snap Ring
19	Y1XM98020	Resin Pad (H03A) w/Fin & Spring w/Split Pin
	Y8VT98010	Resin Pad (H01A) w/Fin & Spring w/Split Pin
20	Y8VT98020	Metal Pad (H03C) w/Fin & Spring w/Split Pin
21	Y1XM98010	Resin Pad (D03S) & Spring w/Split Pin
	Y8FF98020	Resin Pad (D01S) & Spring w/Split Pin
22	Y8DB06100	Split Pin
23	Y8FF18000	Pad Spacer
24	Y8FF19000	Bleeding Spacer
25	Y8K198010	Lock Ring & Washer
26	Y12009230	TL-LR15 Lock Ring Removal Tool
27	Y83998010	Mineral Oil Bleed Kit (50 ml)
28	Y8G498020	Caliper Fixing Bolt Unit (M6 x 37.9) for SM-MA-F180P/P2
	Y8J498010	Caliper Fixing Bolt Unit (M6 x 40.2) for SM-MA-F203P/PM
29	Y81703000	Snap Ring
30	Y8G498030	Caliper Fixing Bolt Unit (M6 x 32.1) for SM-MA-F180P/P2
	Y8J498020	Caliper Fixing Bolt Unit (M6 x 34.4) for SM-MA-F203P/PM
* 31	Y26L98030	Lock Ring & Washer (Externally serrated type)
* 32	Y13098000	TL-FC36 Lock Ring Removal Tool

Dec.-2018-4408B

© Shimano Inc. I

Specifications are subject to change without notice.

SHIMANO