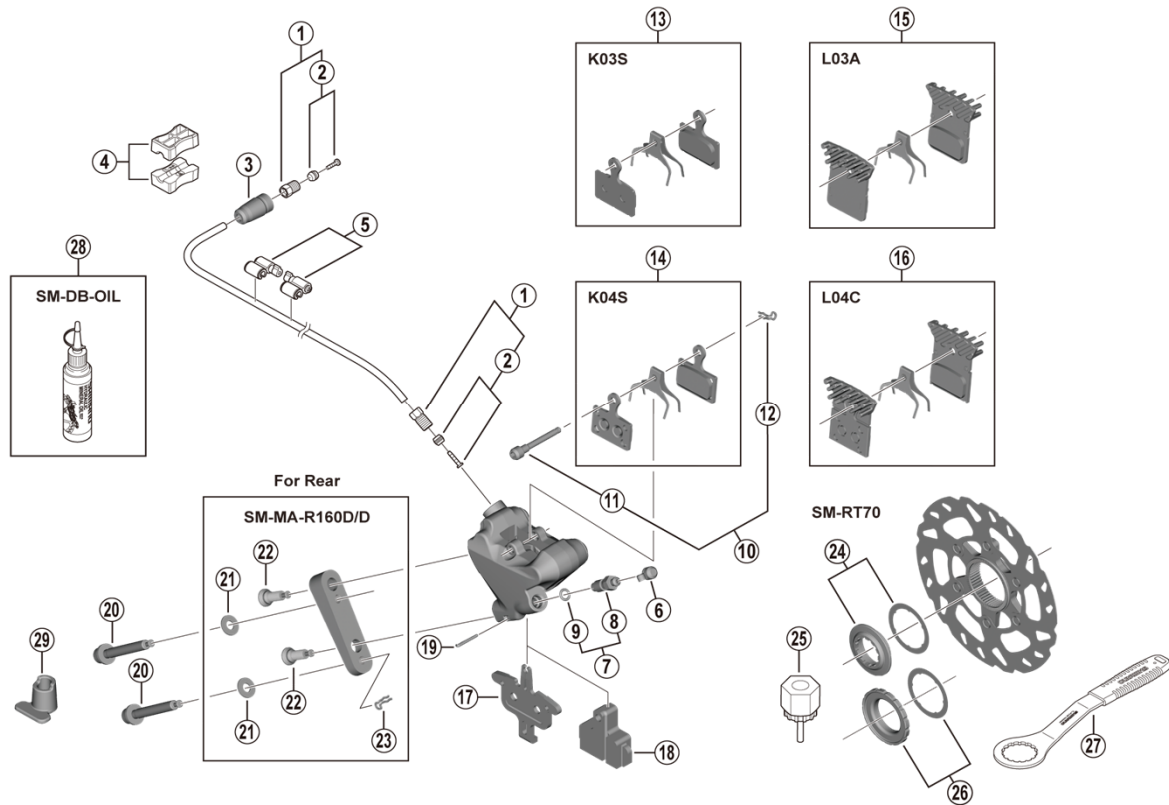


SLX Disc Brake
BR-M7110 Brake Caliper
SM-RT70 Disc Rotor

SM-BH90-SS Brake Hose



ITEM NO.	SHIMANO CODE NO.	DESCRIPTION
1	Y8JA98010	Flare Nut Unit
2	Y8JA98020	Olive & Connector Insert
3	Y1XJ16000	Cover
4	Y8H198030	TL-BH61 Shimano original tool (2 pcs.)
5	Y83098040	SM-HANG Hose Supporter A & B
6	Y8B214000	Bleed Nipple Cap
7	Y8CL98050	Bleed Nipple & Seal Ring
8	Y8CL24200	Bleed Nipple
9	Y8B511001	O-Ring for Bleed Nipple
10	Y2GM98010	Pad Axle & Snap Retainer
11	Y2GM05000	Pad Axle
12	Y8J716000	Snap Retainer
13	Y8Y898010	Resin Pad (K03S) & Spring
14	Y8N398020	Metal Pad (K04S) & Spring
15	Y8PU98040	Resin Pad (L03A) w/Fin & Spring
16	Y8N398040	Metal Pad (L04C) w/Fin & Spring
17	Y8N218000	Pad Spacer
18	Y8N219000	Bleeding Spacer
19	Y8N207000	Screw Fixing Pin
	Y8N208010	Caliper Fixing Screw C for 20 mm Rear mount thickness
20	Y8N208020	Caliper Fixing Screw C for 25 mm Rear mount thickness
	Y8N208030	Caliper Fixing Screw C for 30 mm Rear mount thickness
21	Y8NU02000	Washer for R160 Adapter
22	Y8N206000	Caliper Fixing Screw B
23	Y8NU03000	Snap Retainer
24	Y8P898010	Lock Ring & Washer
25	Y12009230	TL-LR15 Lock Ring Removal Tool
26	Y26L98030	Lock Ring & Washer (External spline type)
27	Y13098000	TL-FC36 Lock Ring Removal Tool
	Y83998020	Mineral Oil (100 ml)
	Y83998030	Mineral Oil (500 ml)
29	Y8N221000	Screw Length Selector

May-2020-4738
 © Shimano Inc. I

Specifications are subject to change without notice.

SHIMANO