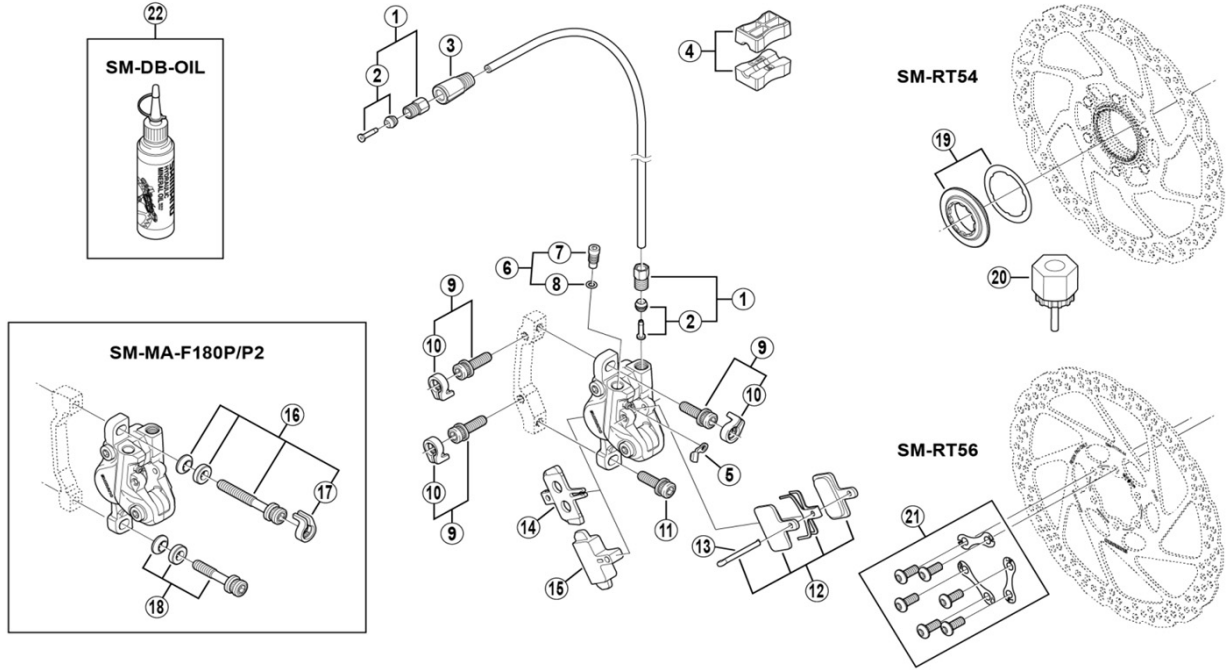


Front Disc Brake

BR-M395-F Brake Caliper
SM-BH59-A Brake Hose

SM-RT54 Disc Rotor/Center Lock
SM-RT56 Disc Rotor/6-Bolt



BR-M446-F

ITEM NO.	SHIMANO CODE NO.	DESCRIPTION	INTERCHANGEABILITY	
1	Y8H598010	Flare Nut Unit	B	
2	Y8H298020	Olive and Connector Insert	A	
3	Y8H203210	Cover	B	
4	Y8H198030	TL-BH61 Shimano original tool (2 pcs.)	A	
5	Y8B214000	Bleed Nipple Cap	A	
6	Y8VZ98010	Bleed Screw and O-Ring		
7	Y8VZ07000	Bleed Screw		
8	Y8B511000	O-Ring	A	
* 9	Y2F398020	Caliper Fixing Screw (M6 x 18.7) and Snap Ring	A	
* 10	Y2RT06000	Snap Ring	A	
11	Y8C509020	Caliper Fixing Screw (M6 x 18.7)	A	
* 12	EBPB01SRESINA	B01S Resin Pad and Spring with Split Pin 3 Type	A	
* 13	Y8DB06100	Split Pin	A	
14	Y8J506000	Pad Spacer	A	
15	Y8FZ05000	Bleeding Spacer	A	
* 16	Y2RT98020	Caliper Fixing Screw Unit (M6 x 37.9)	A	
* 17	Y2RT07000	Snap Ring	A	
18	Y8G498030	Caliper Fixing Screw Unit (M6 x 32.1)	A	
19	Y8K998010	Lock Ring and Washer	B	
20	Y12009230	TL-LR15 Lock Ring Removal Tool	A	
21	Y8KT98010	Rotor Fixing Screw and Lock Washer	B	
* 22	Y83998020	Mineral Oil (100 ml)	A	
* 22	Y83998030	Mineral Oil (500 ml)	A	

A: Same parts.

B: Parts are usable, but differ in materials, appearance, finish, size, etc.

Absence of mark indicates non-interchangeability.

Specifications are subject to change without notice.

Aug.-2020-3356A

© Shimano Inc. I

SHIMANO